

20TH

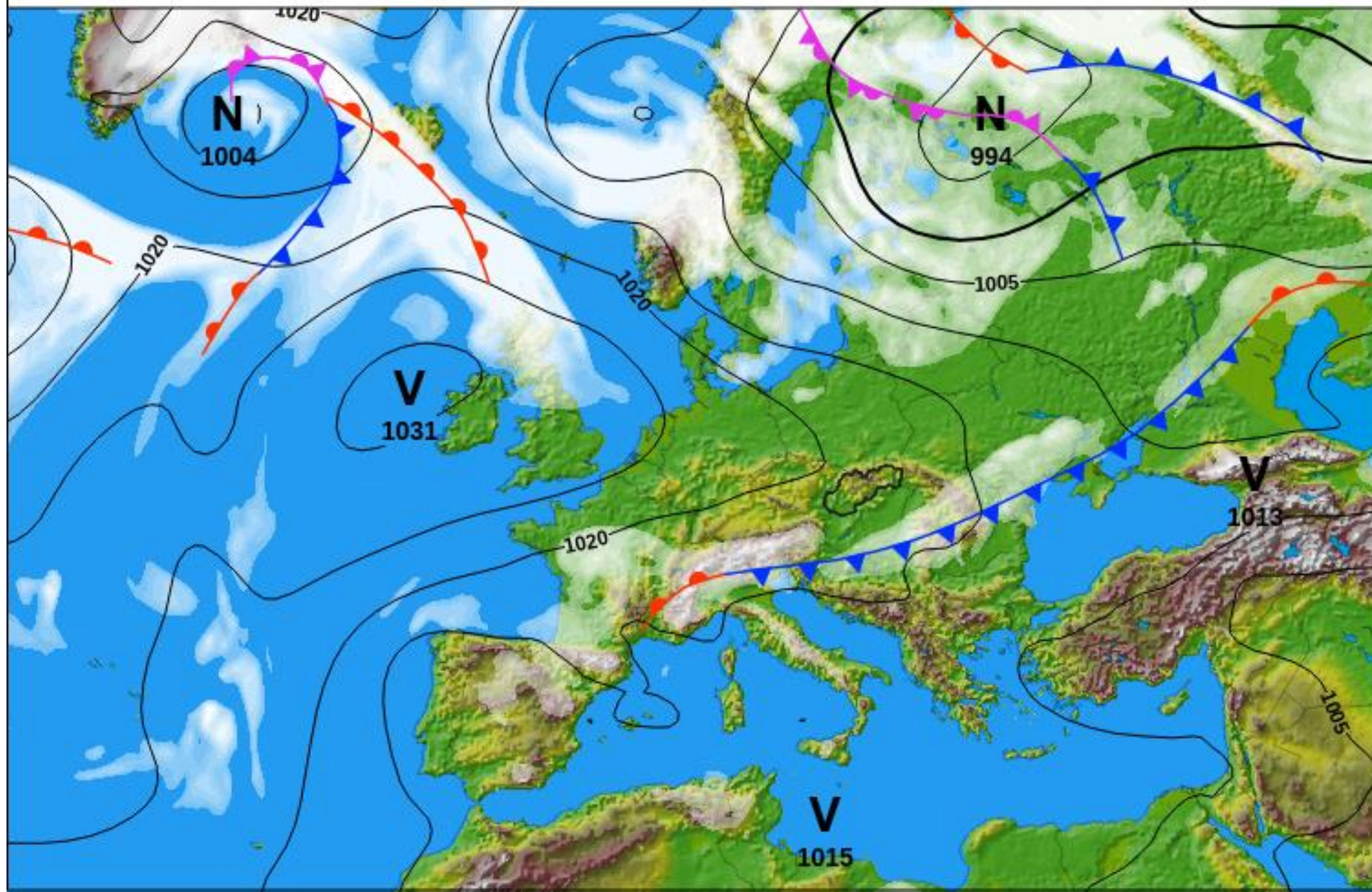
**FAI EUROPEAN
GLIDING
CHAMPIONSHIP**

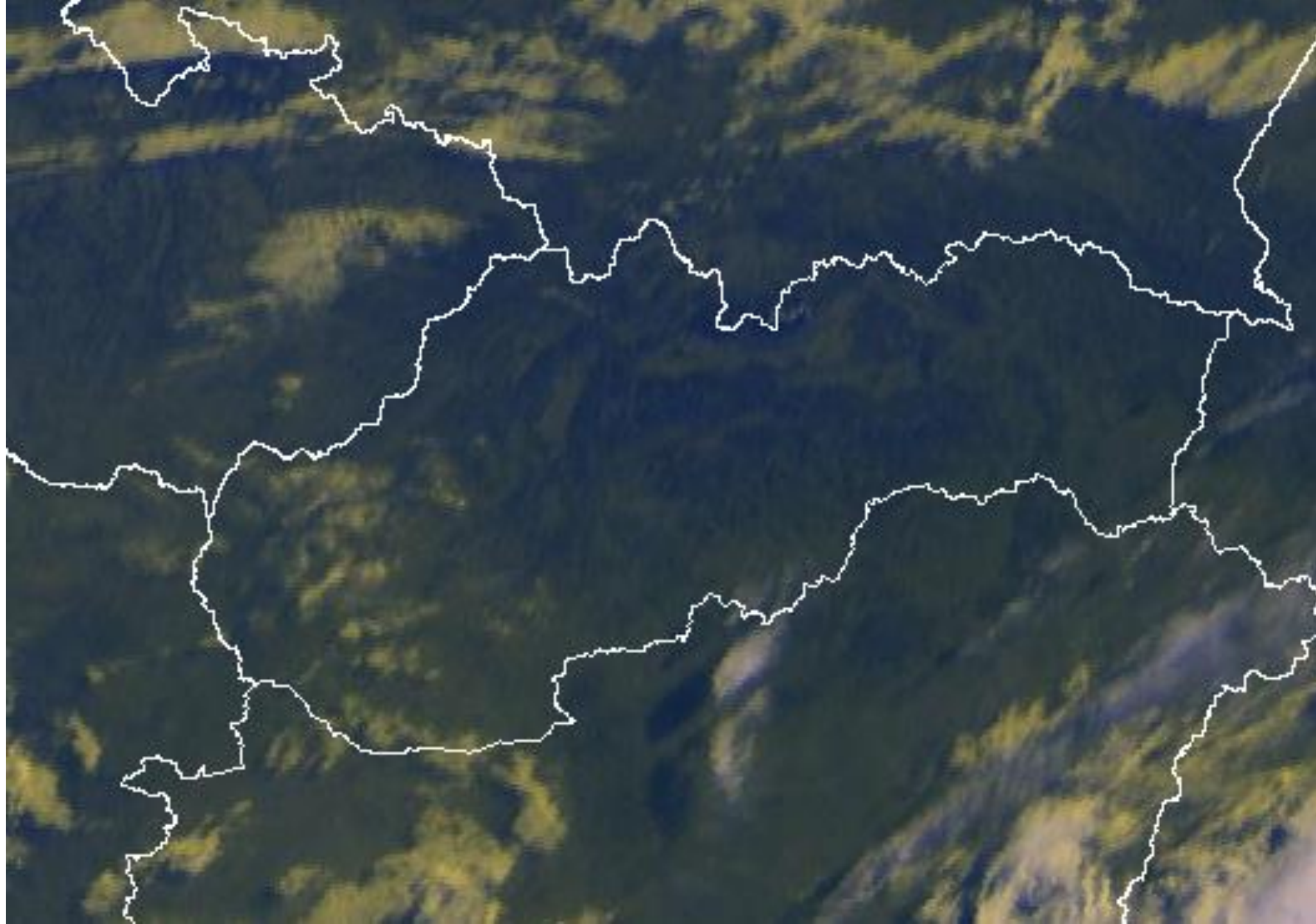
SLOVAKIA
PRIEVIDZA
2019



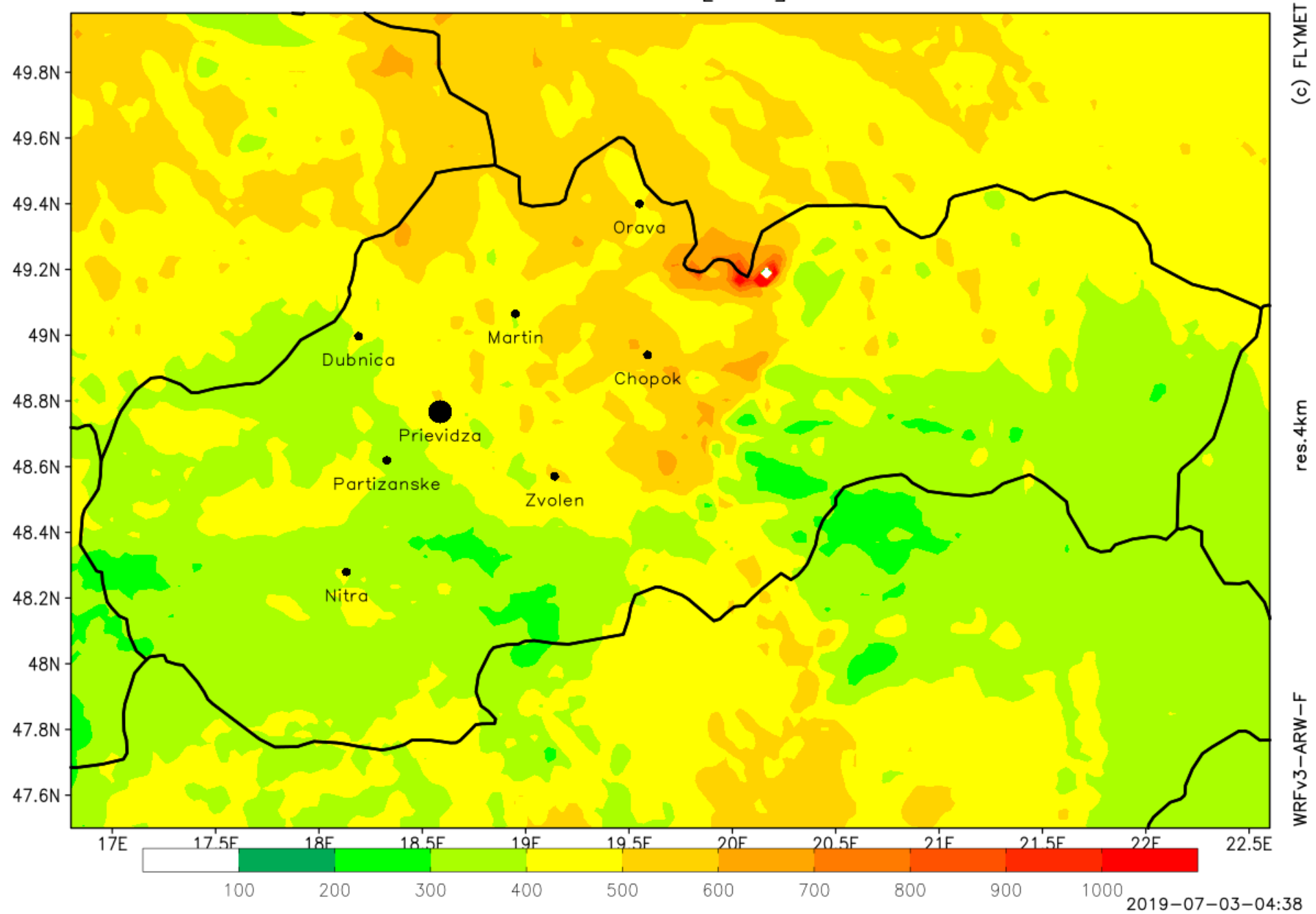
General timing

Main briefing 10:15





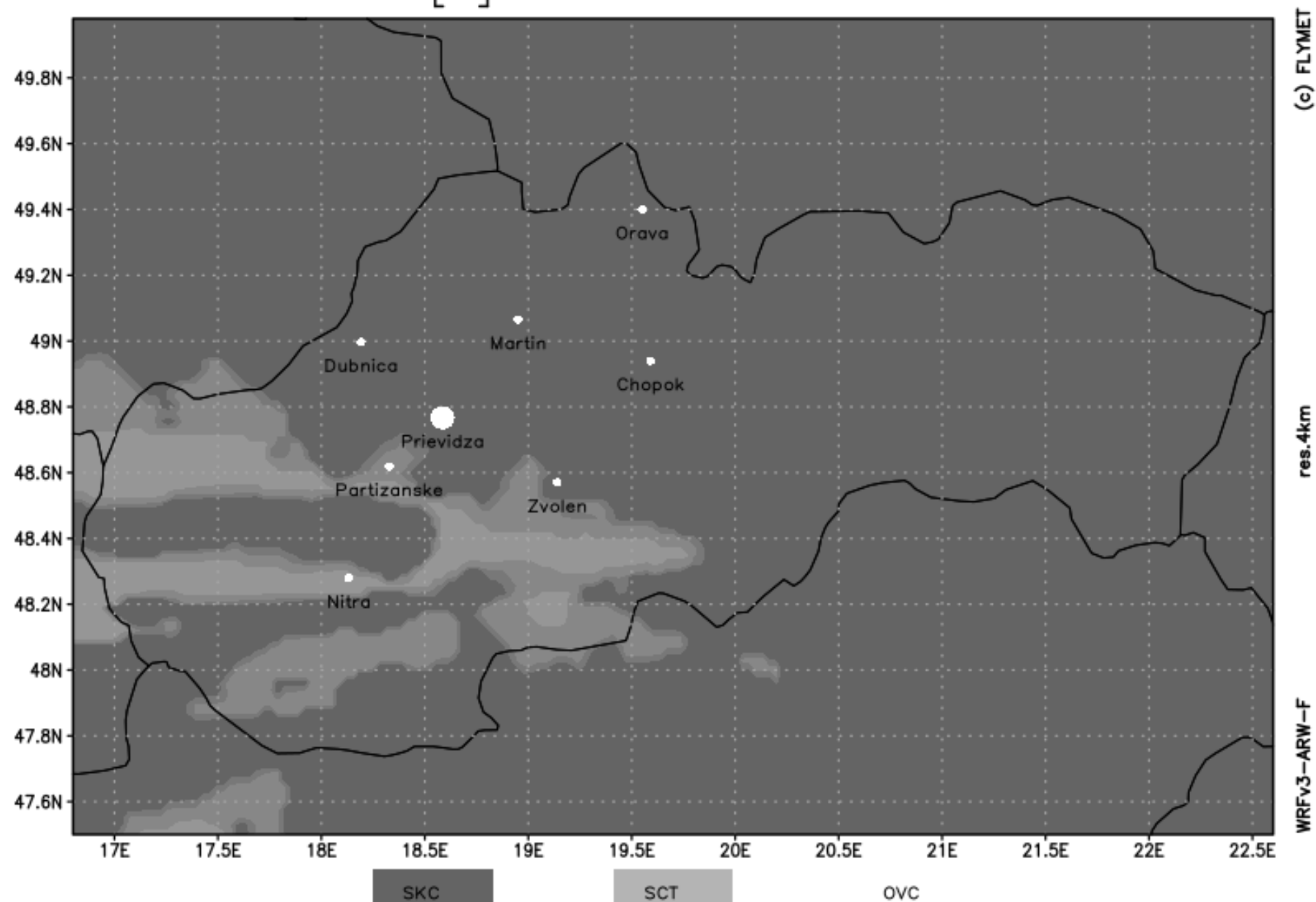
max. task distance STD [km] Wed 03.07.2019



total clouds [%]

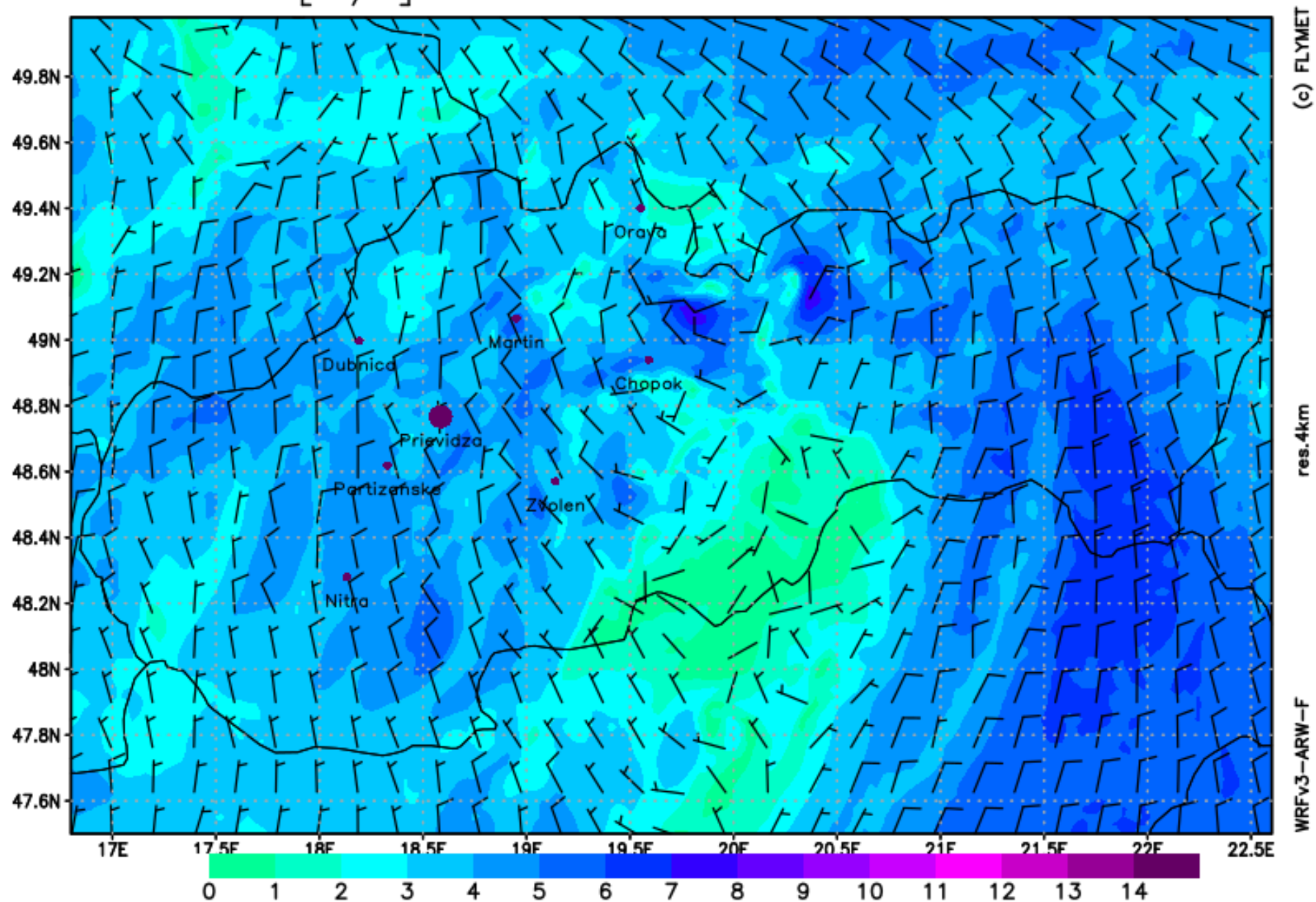
Wed 03.07.2019

14 hod UTC



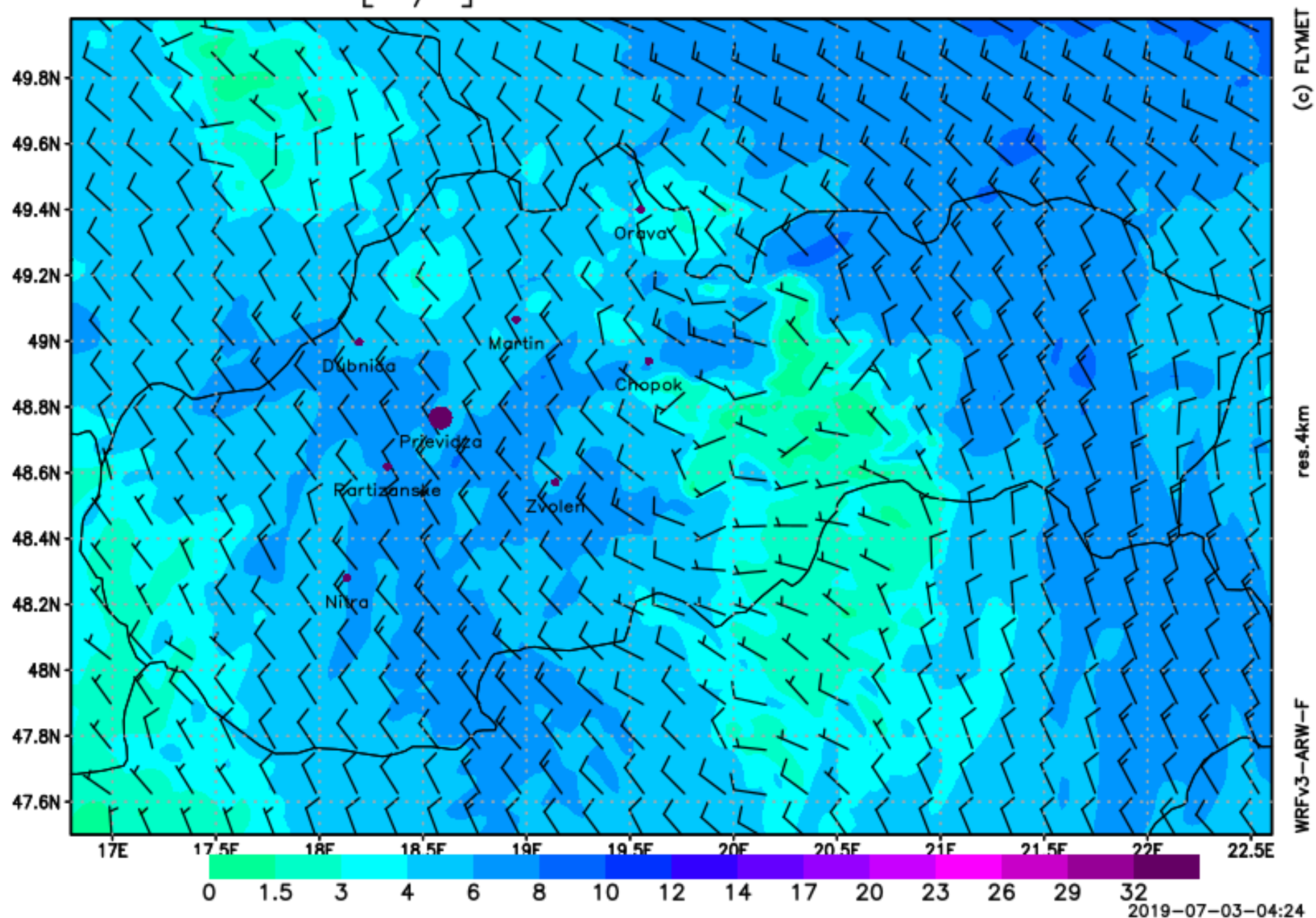
wind 10 m [m/s]

Wed 03.07.2019 09 UTC

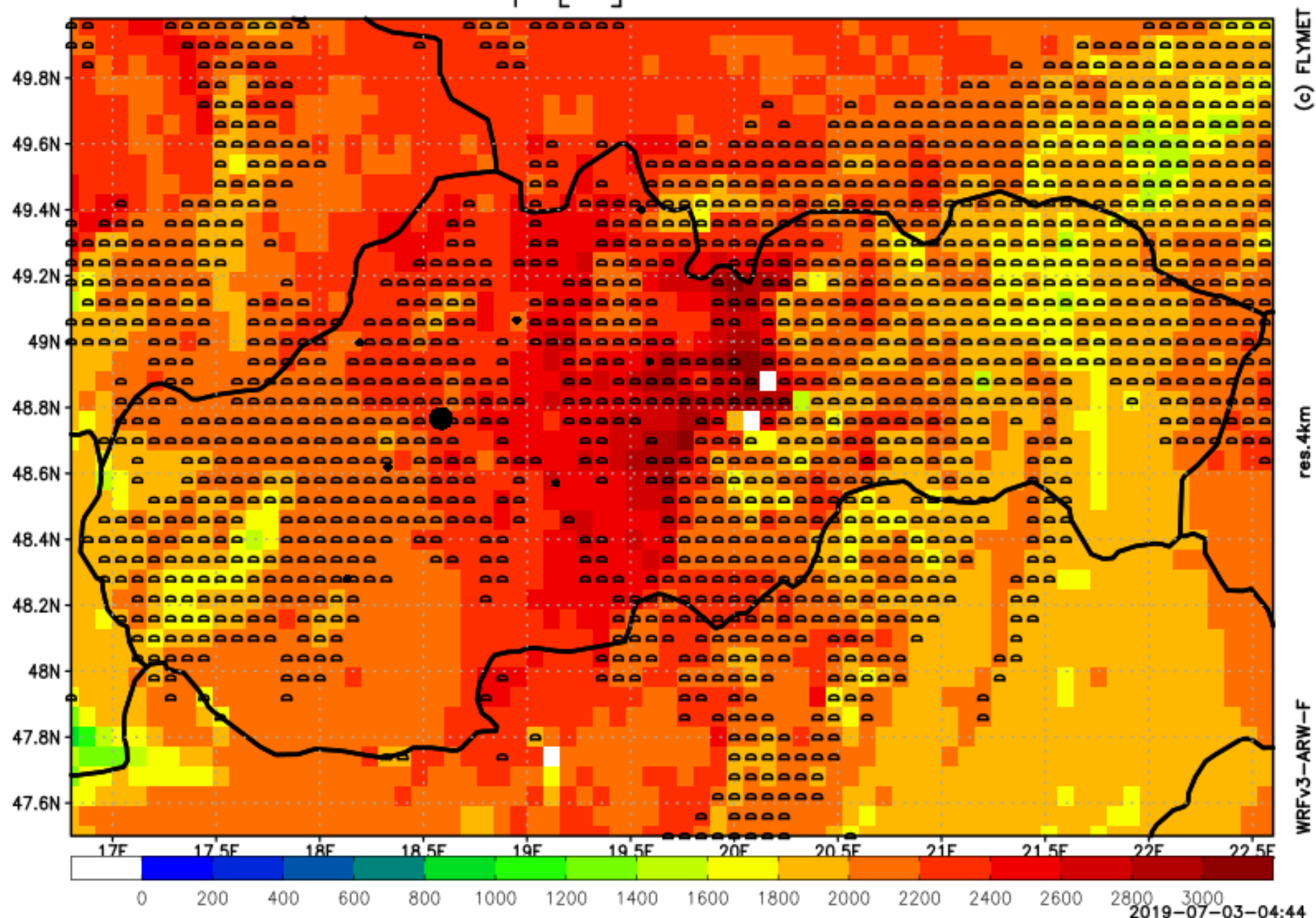


wind 850 hPa [m/s]

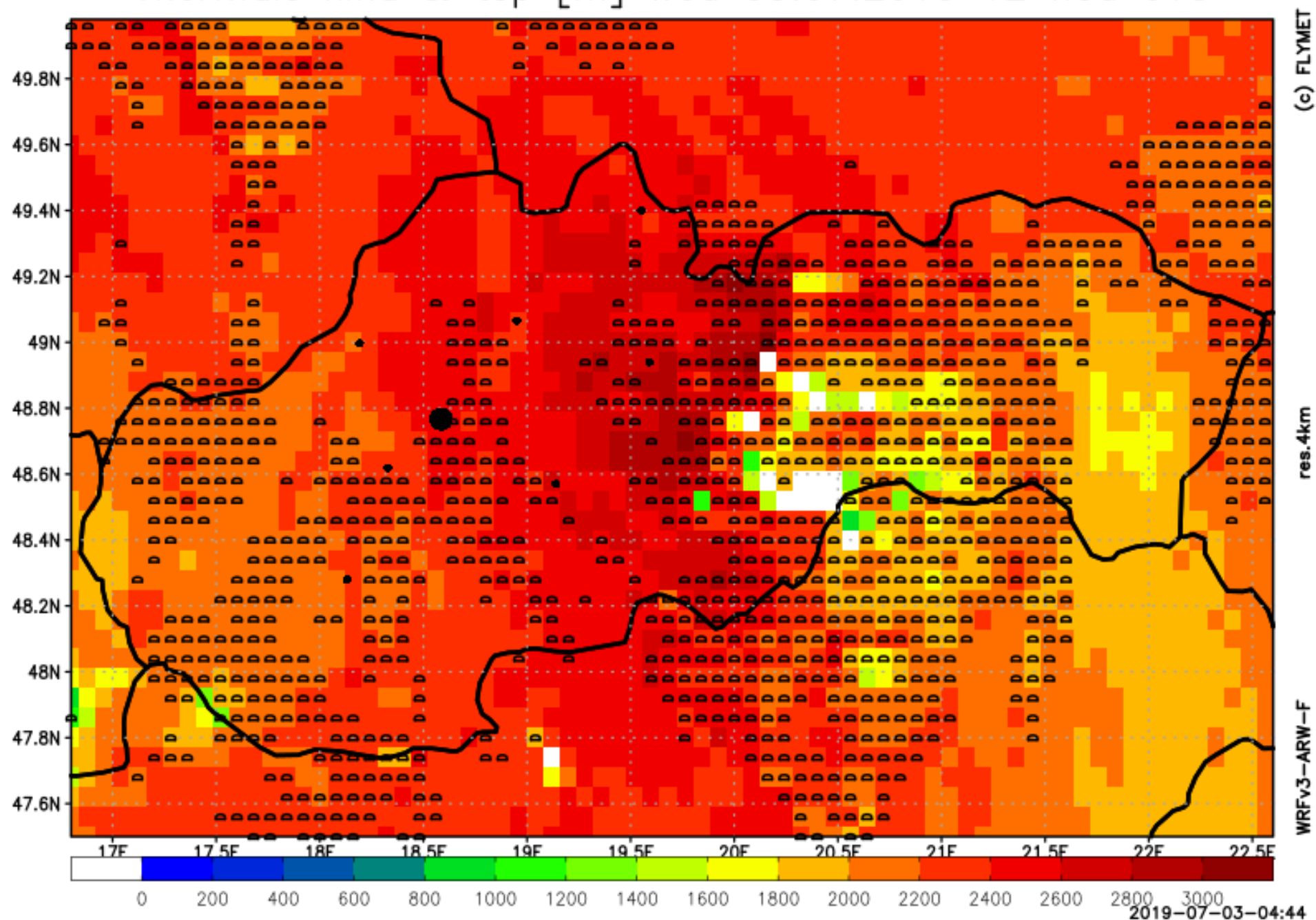
Wed 03.07.2019 11 UTC



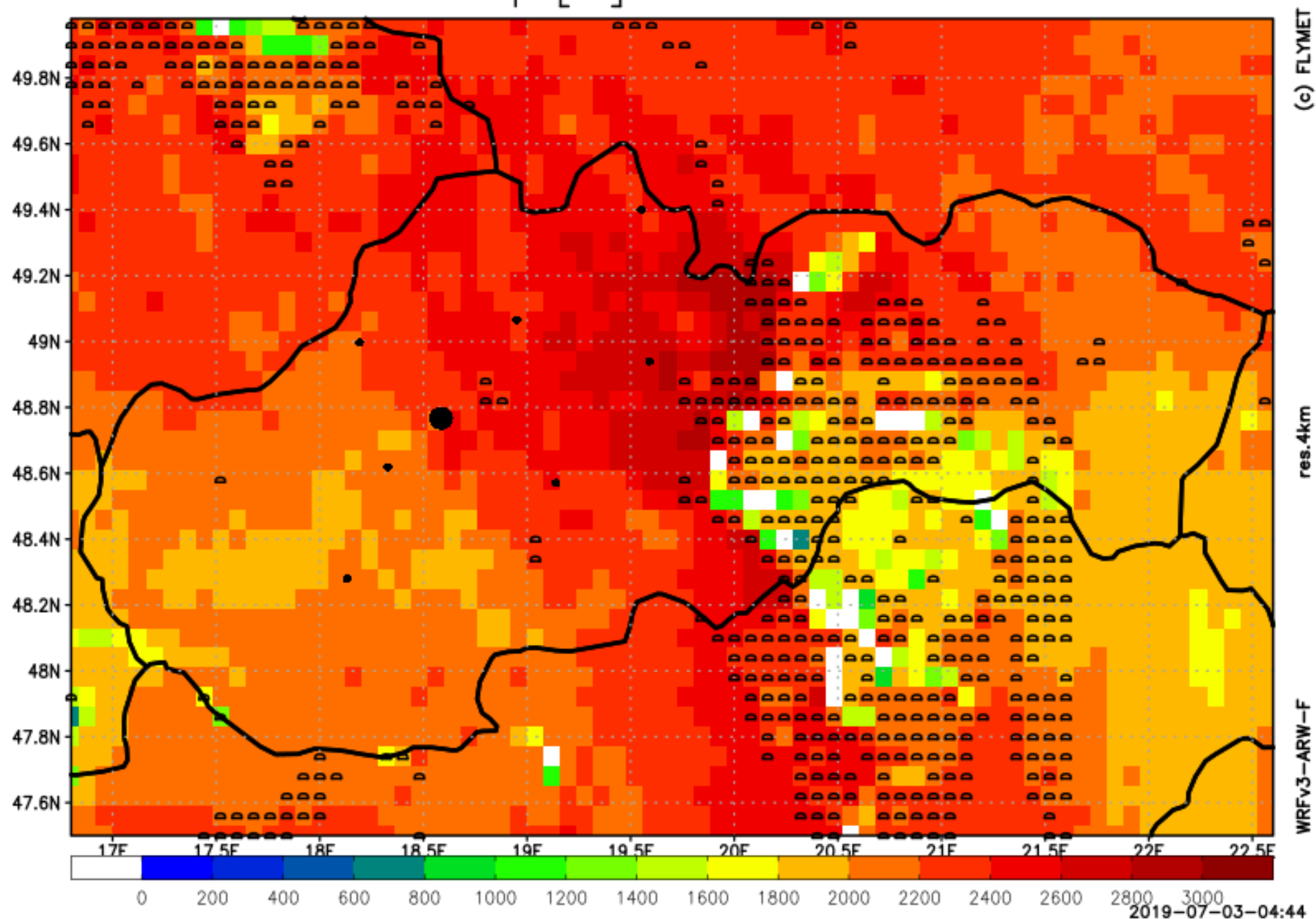
Thermals kind & top [m] Wed 03.07.2019 10 hod UTC



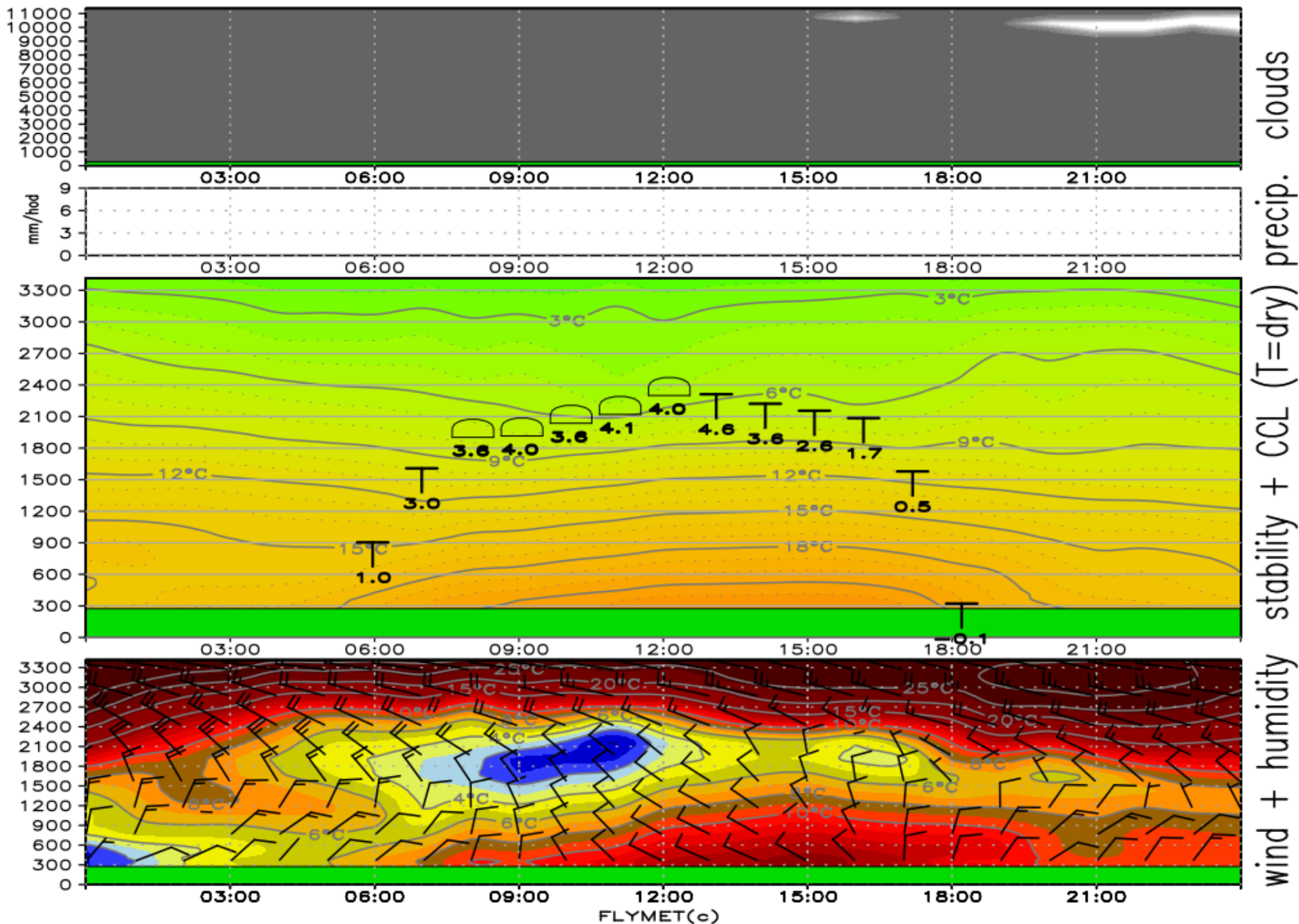
Thermals kind & top [m] Wed 03.07.2019 12 hod UTC



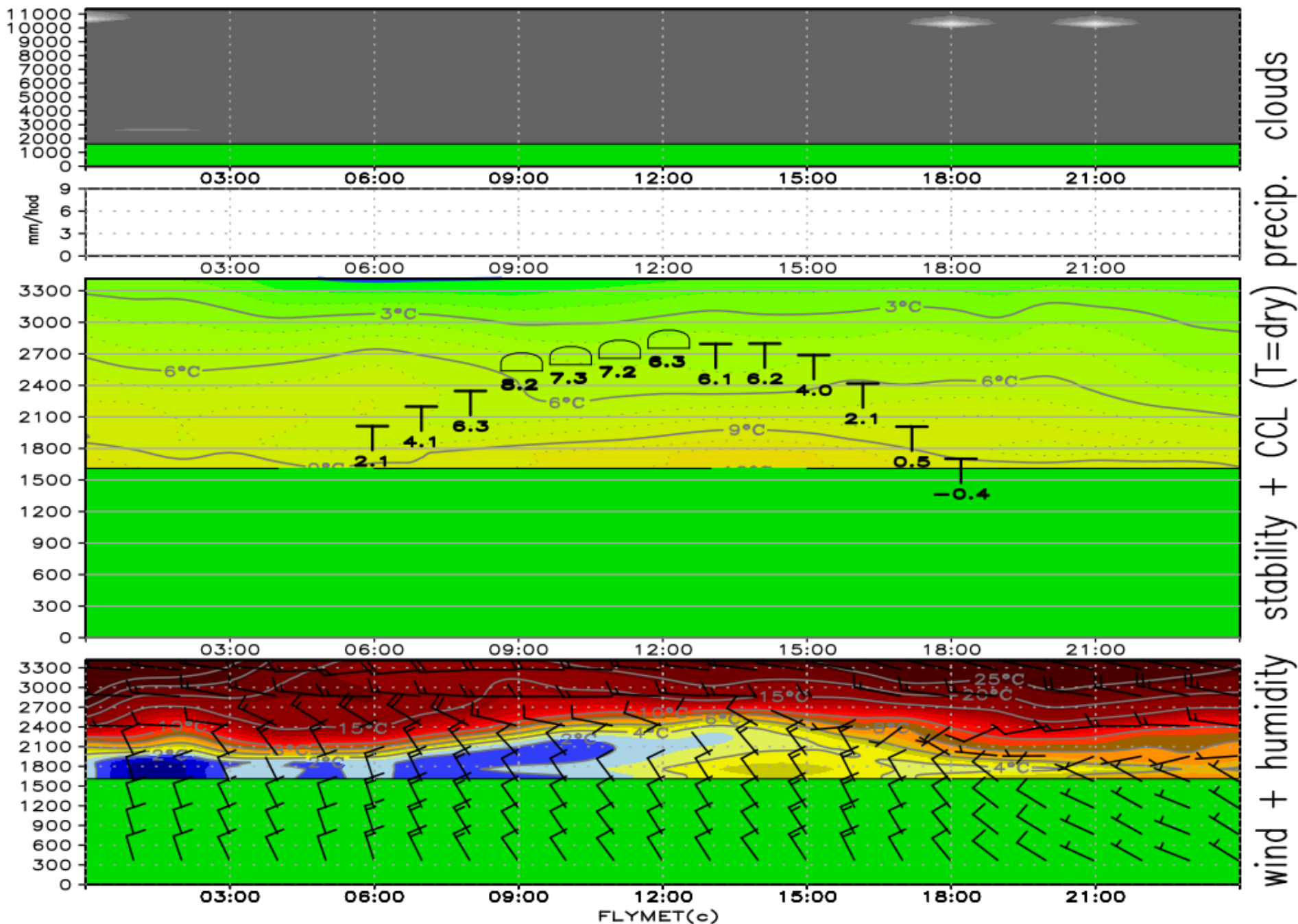
Thermals kind & top [m] Wed 03.07.2019 14 hod UTC



Meteogram ePRIEVIDZA for Wed 03.07.2019



Meteogram eCHOPOK for Wed 03.07.2019



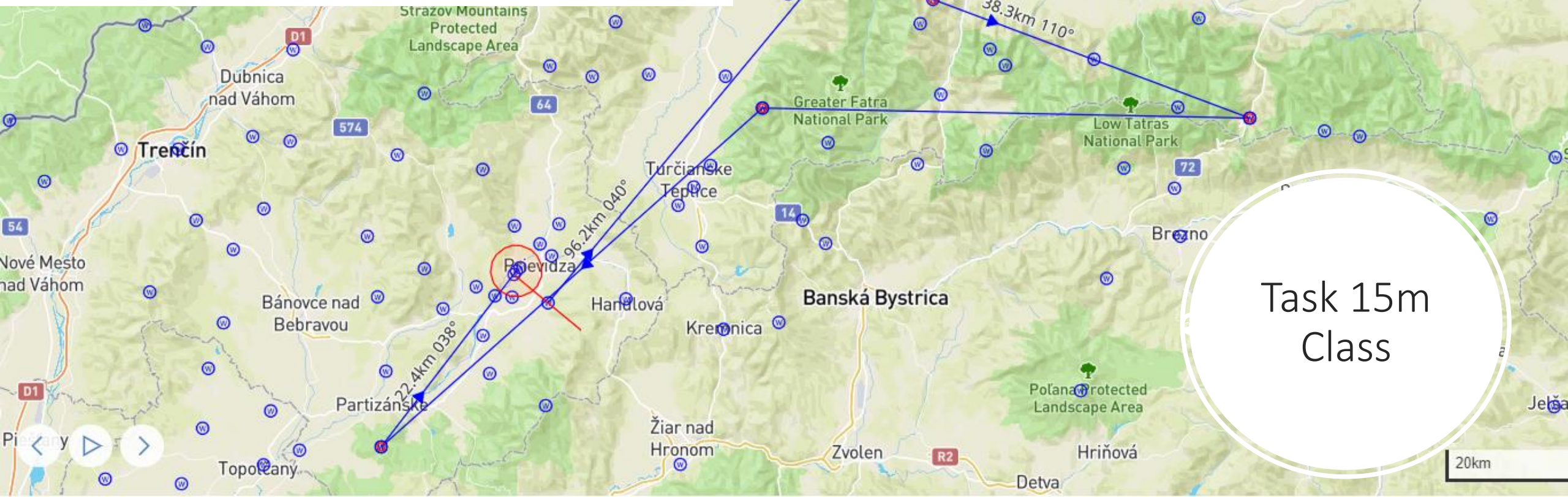
Task Club Class

Turnpoint	Distance	Direction	Observation zone
001BOJNICE	4.30 km	188.1°	Line 10.00 km (Radius 5.00 km)
418TERCHOVA	61.86 km	32.6°	Cylinder R=0.50 km
135CHOPOK	51.89 km	130.2°	Cylinder R=0.50 km
383SKLABINA	42.67 km	286.7°	Cylinder R=0.50 km
359RAKYTA	76.24 km	216.7°	Cylinder R=0.50 km
006PRIEVIDZA	29.68 km	25.3°	Cylinder R=3.00 km
Total:	262.34 km		

Task Standard Class

Turnpoint	Distance	Direction	Observation zone
069DLZIN	8.94 km	143.7°	Line 10.00 km (Radius 5.00 km)
326PILSKO	99.30 km	36.0°	Cylinder R=0.50 km
311ORAVICE MAGURA	42.22 km	126.5°	Cylinder R=0.50 km
234LUBOCHNIANSKE	52.03 km	247.7°	Cylinder R=0.50 km
151JEDLOVE KOSTOLANY	83.80 km	213.0°	Cylinder R=0.50 km
006PRIEVIDZA	29.88 km	11.4°	Cylinder R=3.00 km
Total:	307.22 km		

Turnpoint	Distance	Direction	Observation zone
002CIGEL	5.69 km	283.5°	Line 10.00 km (Radius 5.00 km)
290NAMESTOVO	96.24 km	39.5°	Cylinder R=0.50 km
269MALINO BRDO	41.74 km	203.8°	Cylinder R=0.50 km
468VYS BOCA	38.33 km	110.2°	Cylinder R=0.50 km
233LUBENA	55.77 km	271.5°	Cylinder R=0.50 km
454VELKY KLIZ	58.45 km	228.8°	Cylinder R=0.50 km
006PRIEVIDZA	22.36 km	37.6°	Cylinder R=3.00 km
Total:	312.90 km		



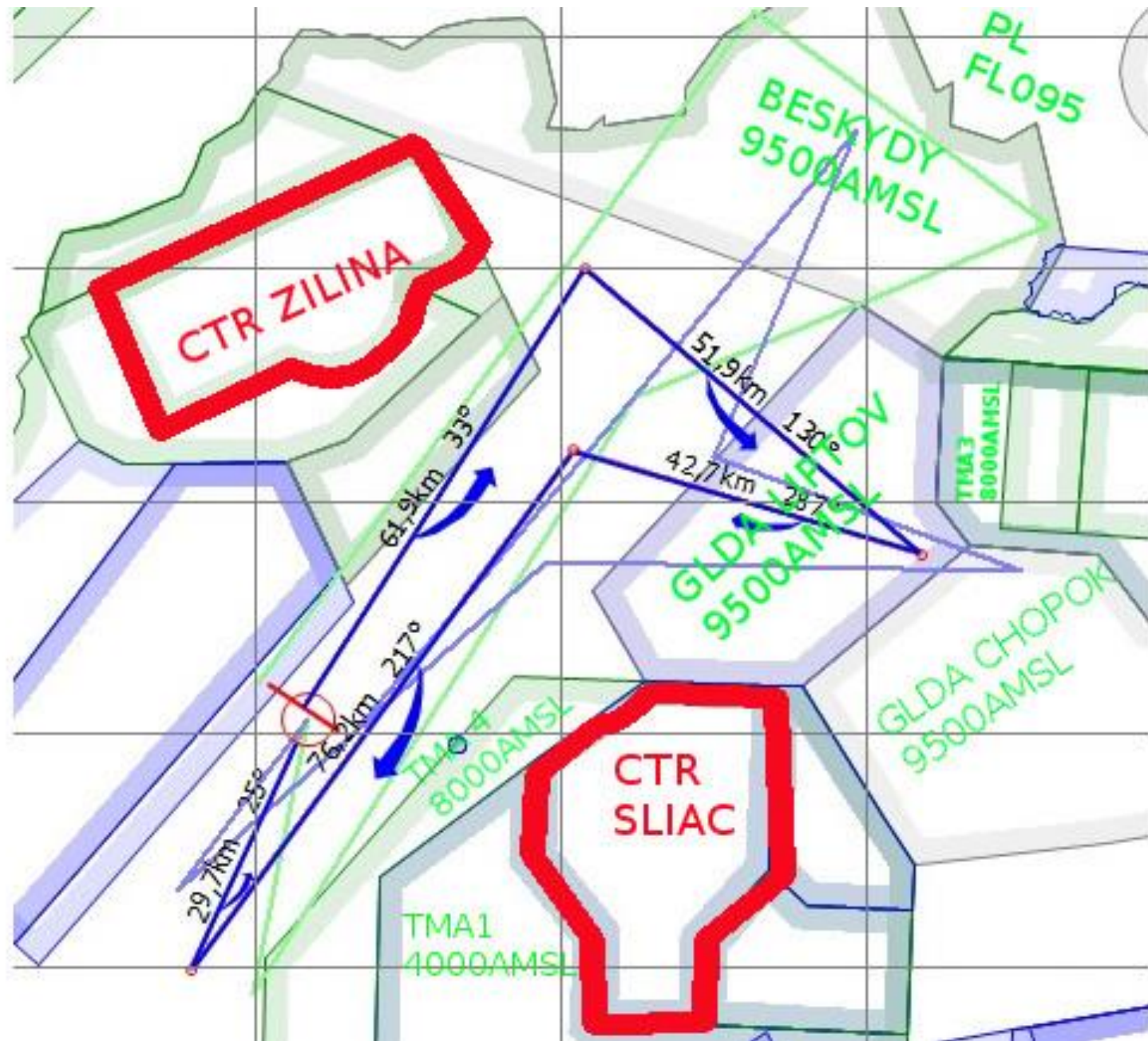
Task 15m
Class

Airspaces

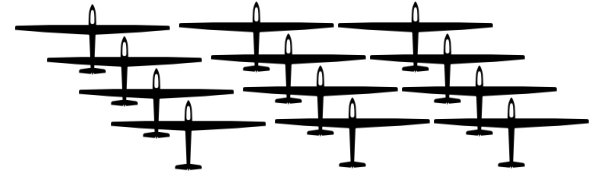
PERMANENTLY PROHIBITED AREAS: SVK: LZP1 MOCHOVCE, LZP29 Jaslovské Bohunice, LZP23 Sala, TMA 1, 2, 3, 4 Sliac, CTR Sliac, CTR Tatry, TMA 1,2,3,4 Poprad, TMA 1, 2, 4 Bratislava, LZR10: HU: PER TIZ; CZ: LKP13 Vrbetice

PROHIBITED AREA FOR TODAY: LZR24 Lest, LZR60A, LZR60B, LZR60C, LZTRA06A, LZTRA06B, LZTRA06C, CTR Piestany, TMA 1, 2 Piestany, CTR Zilina, TMA 1,2,3 Zilina without GLDA Martinky

Airspaces

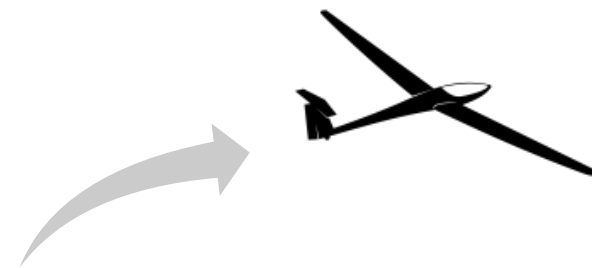


GRID CLOSURE



11:45

FIRST LAUNCH



12:00

PRIEVIDZA GROUND - FREQ 122.600 MHz

Will be activated 30 minutes before the planned take off and will be deactivated 30 minutes after opening the start line for the last starting competition class.

Pilots are required to activate FREQ 122,600 MHz :

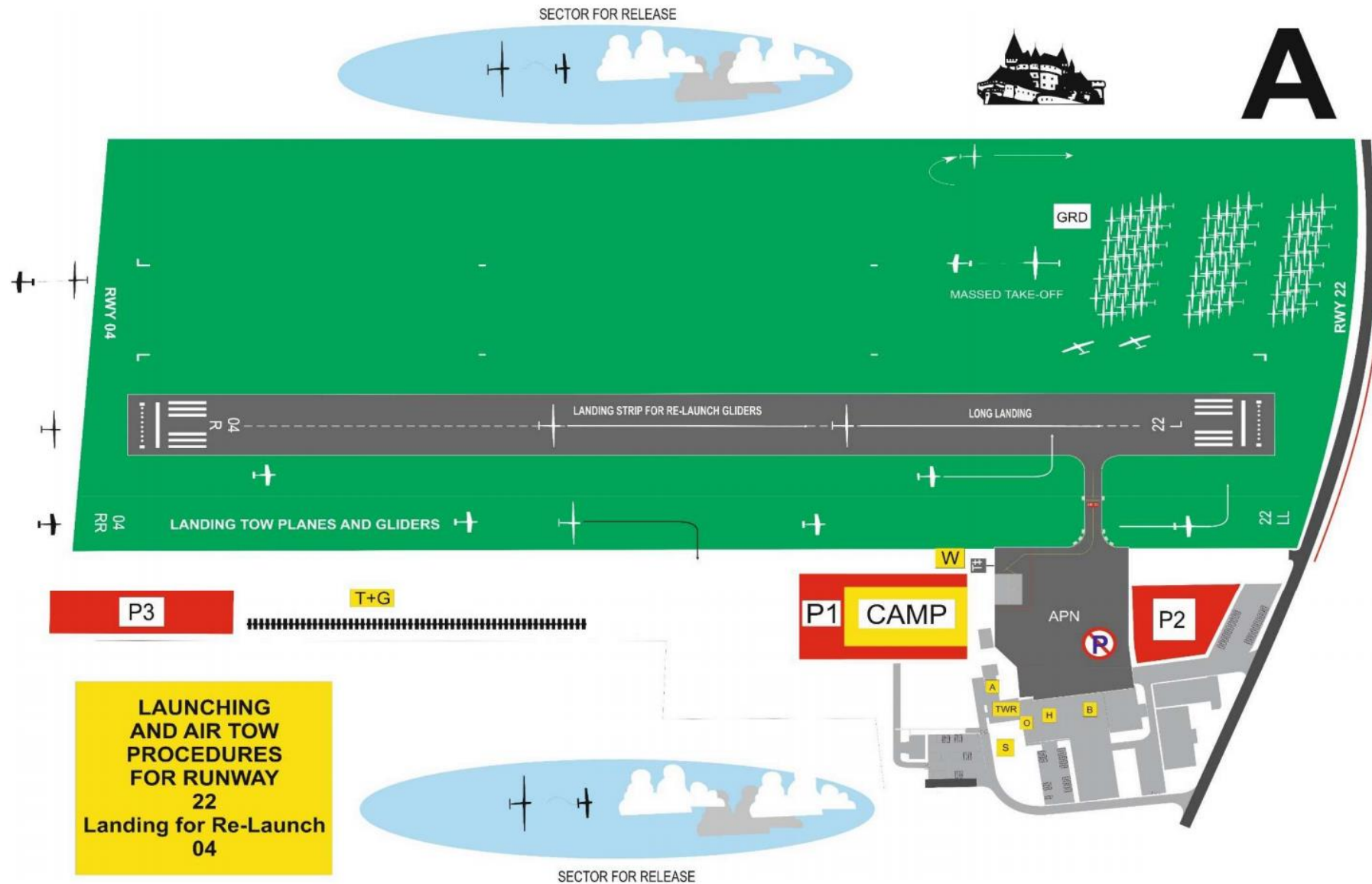
- ✈ At the beginning of the take off
- ✈ Stay on FREQ 122,600 MHz during the launch and re-landing during launches until they have left the release area

PRIEVIDZA TRAFFIC - FREQ 123,055 MHz

- ✈ Pilots switch over to FREQ 123,055 MHz at least 10 km before crossing the finish circle until they have vacated the RWY after landing
- ✈ After leaving the release area
- ✈ On the final glide from at least 10 km away from the finish circle
- ✈ During landing – from the moment pilots join the circuit until they have left the runway

Alternative A

TAKE-OFF from RWY 22



**ATZ LZPE
ENGINE CHECK AND SHUT-OFF AREA**

All engine actions must be done inside
the official ATZ of the airport

CLUB

STANDARD

RELEASE AREA
WEST 2

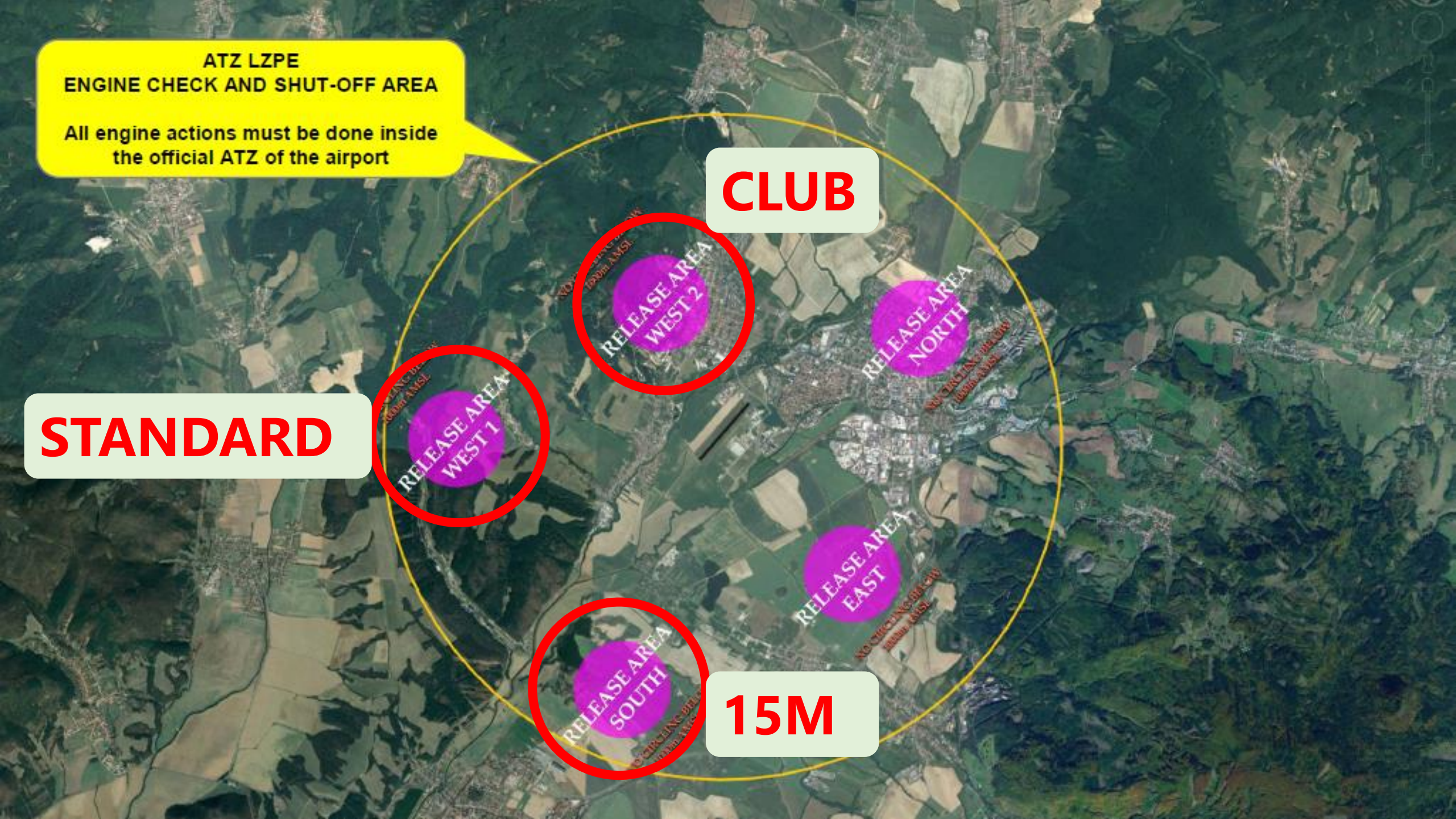
RELEASE AREA
NORTH

RELEASE AREA
WEST 1

RELEASE AREA
EAST

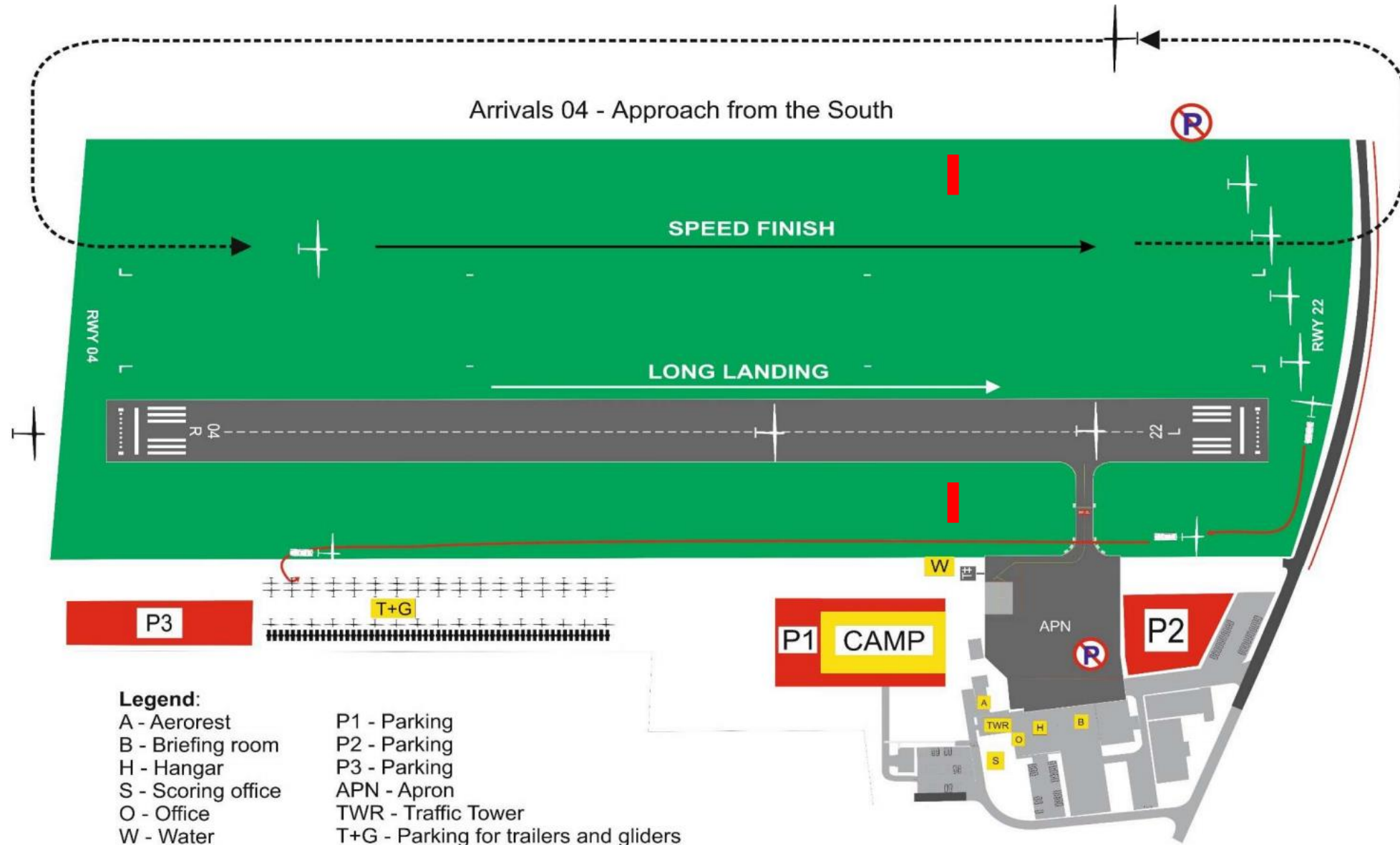
RELEASE AREA
SOUTH

15M



ARRIVALS ON RWY 04

APPROACH FROM THE SOUTH



File upload

www.egc2019.sk/igc

e-mail: 2019egc@gmail.com

Outlanding notification

SMS to **+421 948 641 014**

"CC XXX landed out '*The Nearest Town*';
Pilot OK (if not, add more information),
Glider OK (if not, add more information)"



● PRIEVIDZA

PARTIZÁNSKE ●

SAFETY TIP

Local competition in Partizánske

