

# SNA: European Gliding Championship Prievidza 2019



Airspace structure  
when  
flying gliding competition,  
in Slovak republic, from LZPE.

Lukáš Benedikt,  
Airspace coordinator, SNA

## Airspace generally and main differences:

Structure of the Airspace in Slovak republic is similar to other EU countries. The same EU, EASA and Eurocontrol regulations do apply, as elsewhere in EU countries.

Slovakia uses following airspace classes:

**G:** – from GND to 8000ft AMSL, with exceptions:

- Gliding Areas (only when activated), than 9500ft
- under TMA 4 Poprad(in High Tatras),  
due to high terrain: 10.000ft

**D:** for TMA and CTR of IFR Airports

**C:** controlled airspace above 8000ftAMSL, TMA and CTR of LZIB – Štefánik Bratislava Airport

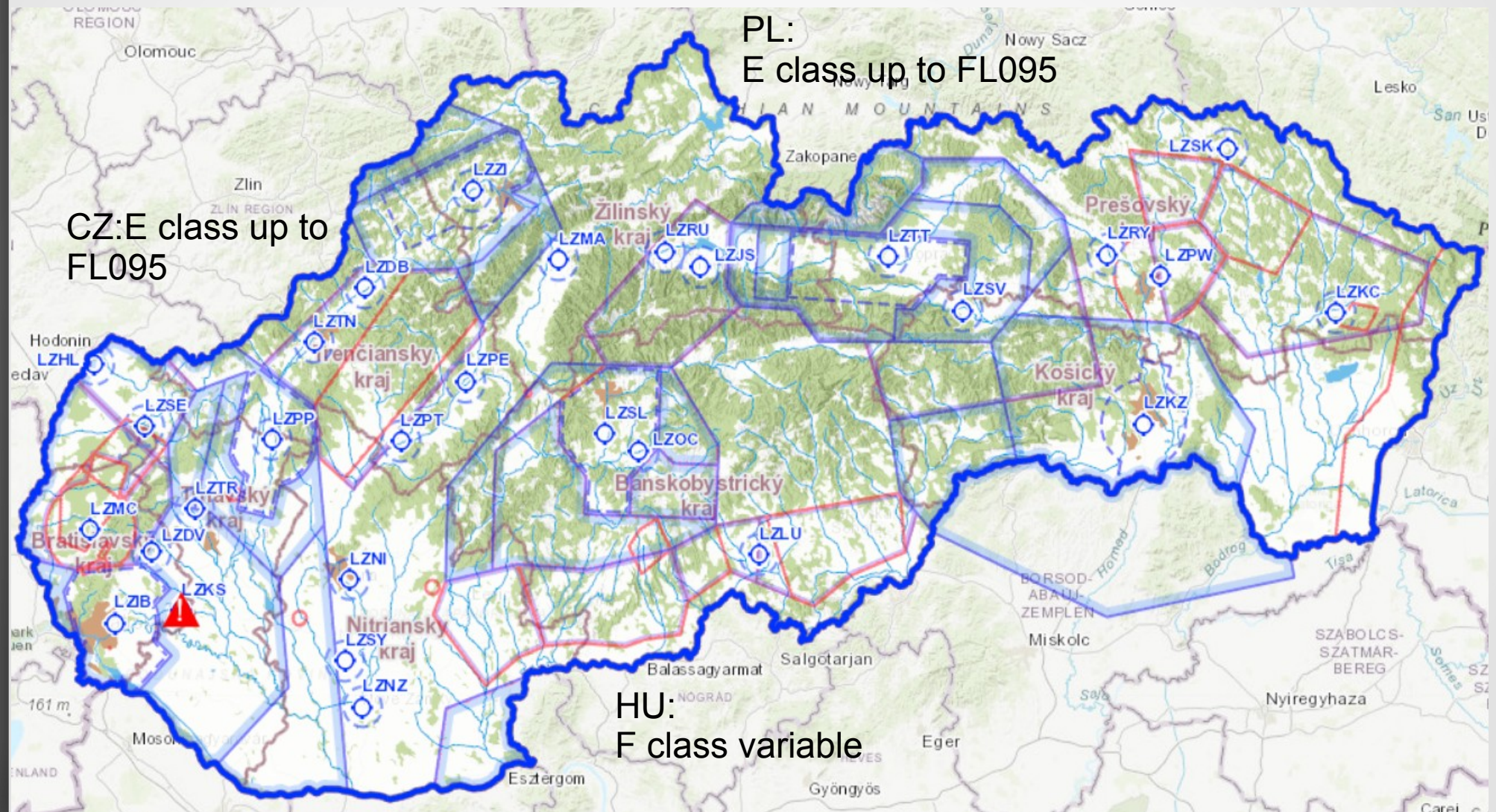
# Airspace generally and main differences:

## Main differences to other EU countries:

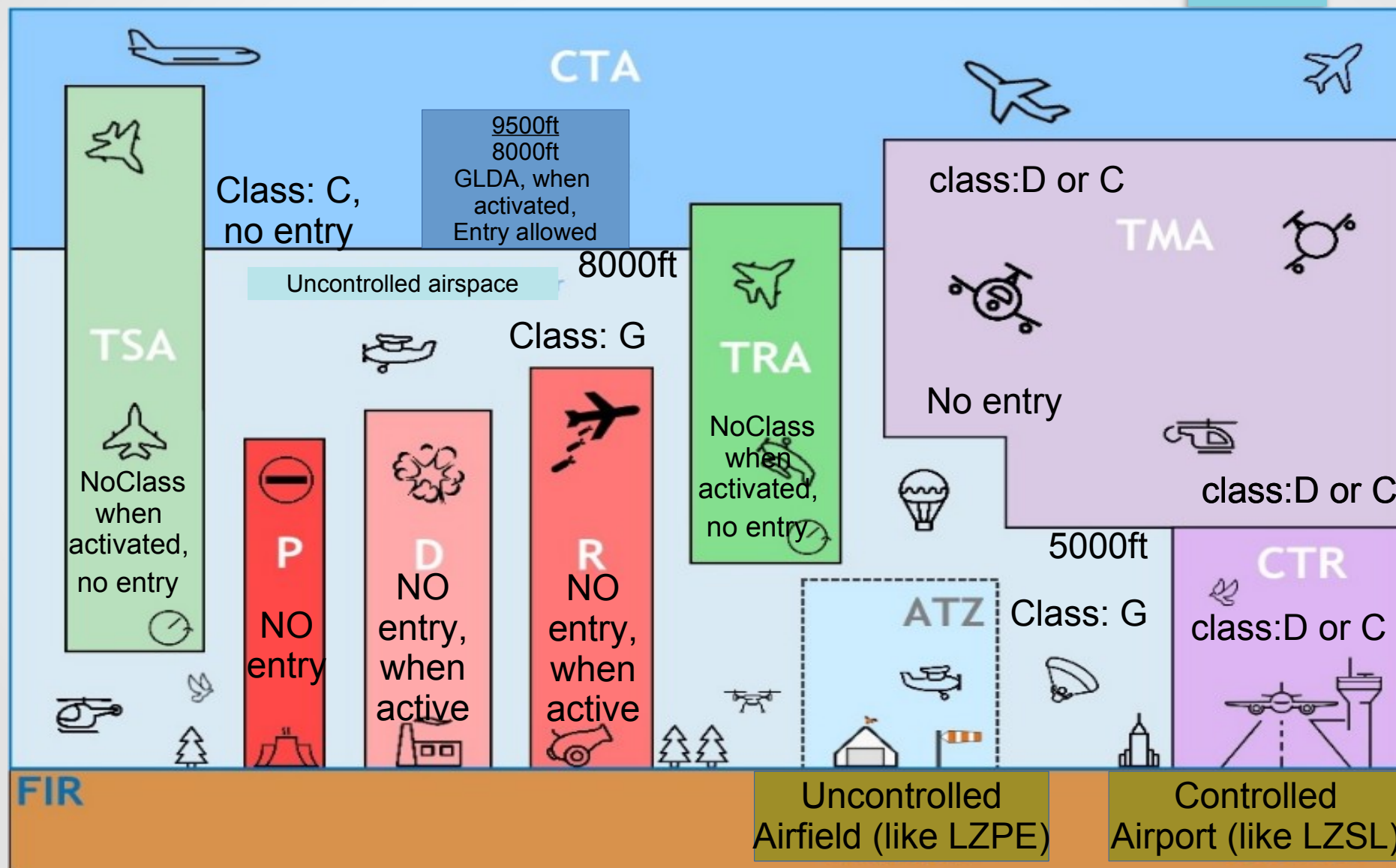
- High Uncontrolled airspace – class G- is from GND to 8000ft
- High transition level: 10.000ft or more
- Above 8000ft: class C – controlled Airspace, entry prohibited. (exception: Gliding Areas(GldA))
- Thus: NO Airspace of class: F, E in Slovakia
- Dangerous zones can be crossed, if not activated in NOTAM. Restricted zones: no entry. Some can be overflown (flown over), when upper limit 5000ft.
- Large and strict CTR, TMA areas, active always, or during workdays
- Large and strict TRA, TSA areas, activated temporarily



# Horizontal structure – whole Slovakia



# Vertical structure in Slovakia, when flying gliding competition



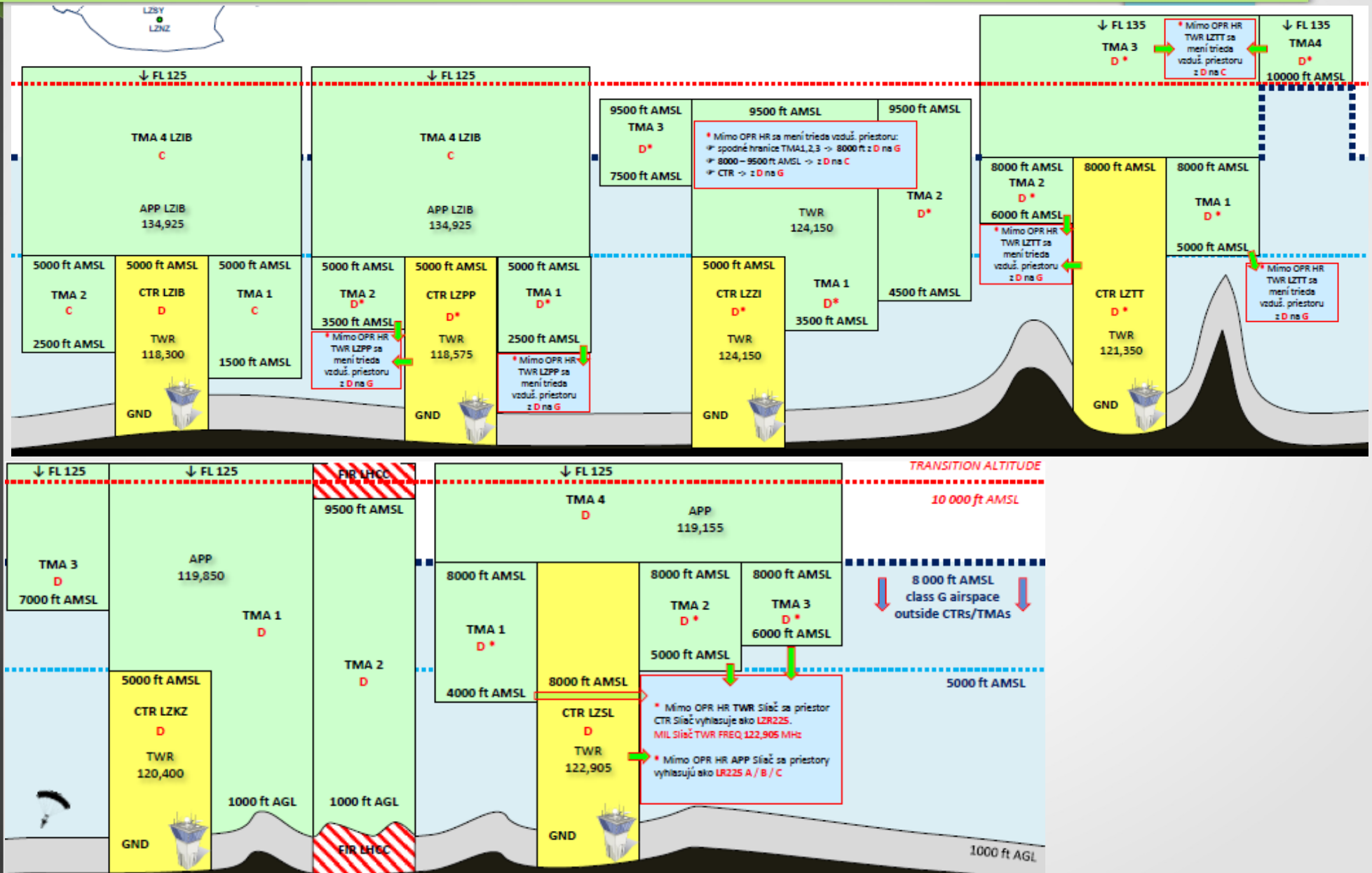


# Vertical structure – comparsion to CE countries

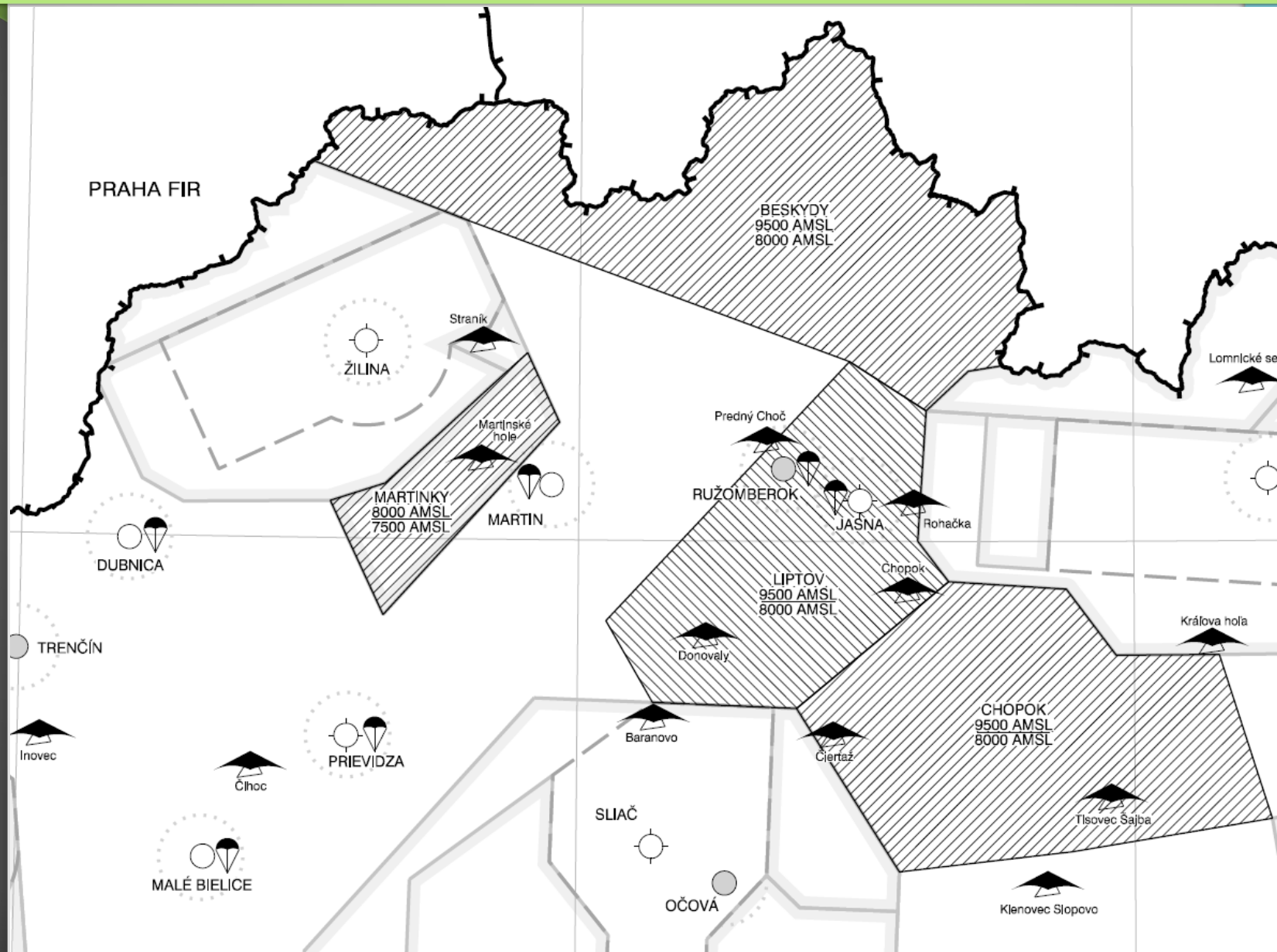
	States FAB CE							Neighb. States (not FAB CE)			
State	Austria	Bosnia and Herzegovina	Czech Republic	Croatia	Hungary	Slovakia	Slovenia	Poland	Ukraine	Switzerland Germany	Italy
	C						C				C
FL 195	D			C							
FL 140		C	C		C			C	C	C	
FL 125	E										
FL 115	do 11500ft			FL 115		C					
FL 110	Salzburg G						D				
FL 100		FL 100								FL 100	
9500 FT					9500 ft	9500ft		FL 095	9500 ft	FL 130 Alpy	
9000 FT	G/E		FL 095			GLD A					G
8000 FT	G			D		8000 ft					
7500 FT	Klagenfurt				F		7500 ft				
7000 FT	E		E							E	AWY, RNAV, CDR (vnorené)
6000 FT	Hallein									Nad 7000 ft ODPOVEDAČ	
5000 FT										Len MOT	
4000 FT											FL 115 D
2000 FT											FL 90 E
1000 FT			G	G							
GND											

Gliding Areas in SVK

## Vertical structure – all major Airports



# Gliding Areas



4 Gliding Areas:  
Beskydy,  
Martinky,  
Liptov  
Chopok

Often used  
during  
competition.

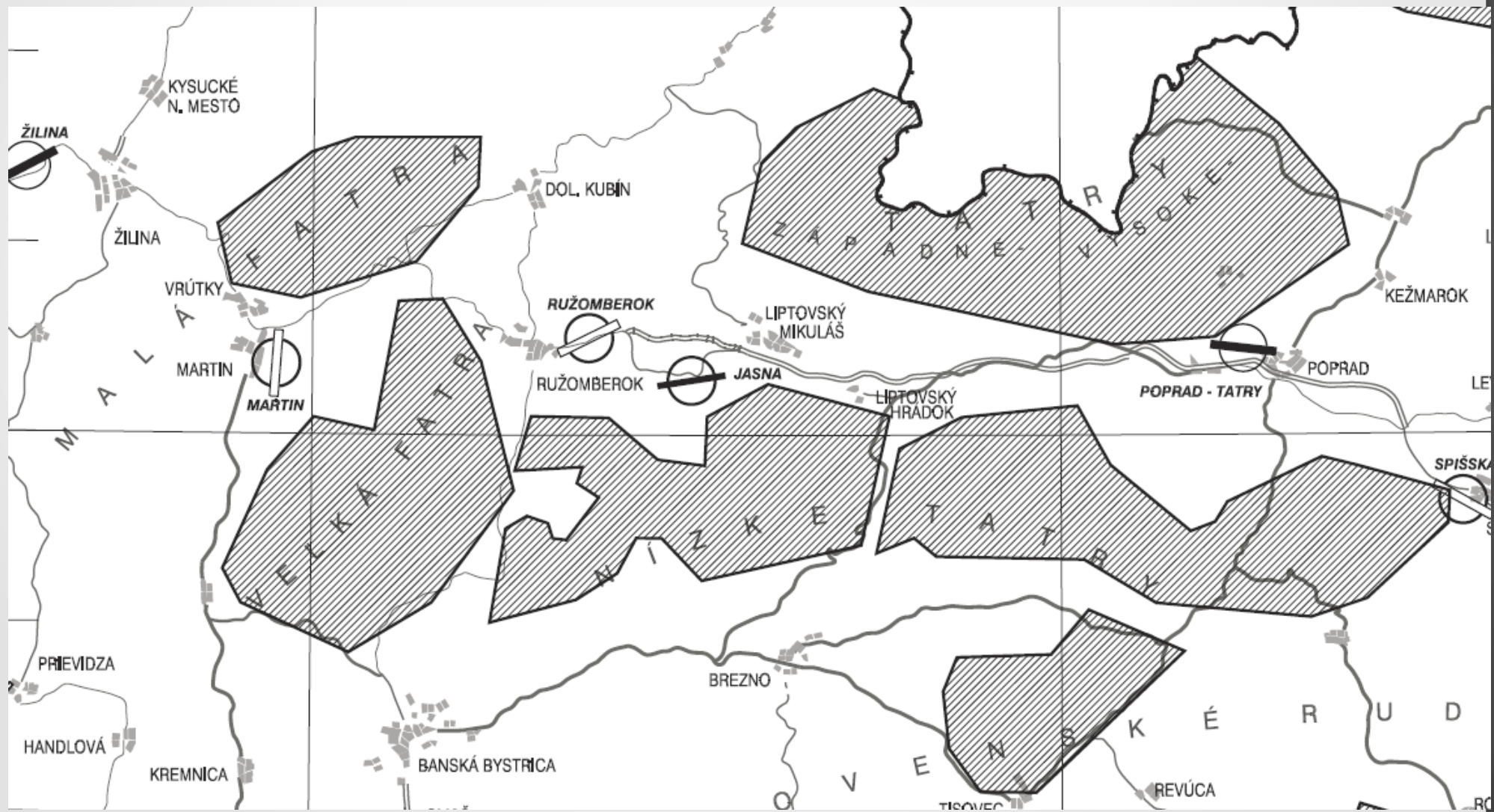
Watch  
task sheet,  
for  
activation.

Raises upper  
limit from  
8k to 9,5k ft  
(exc. Martinky)



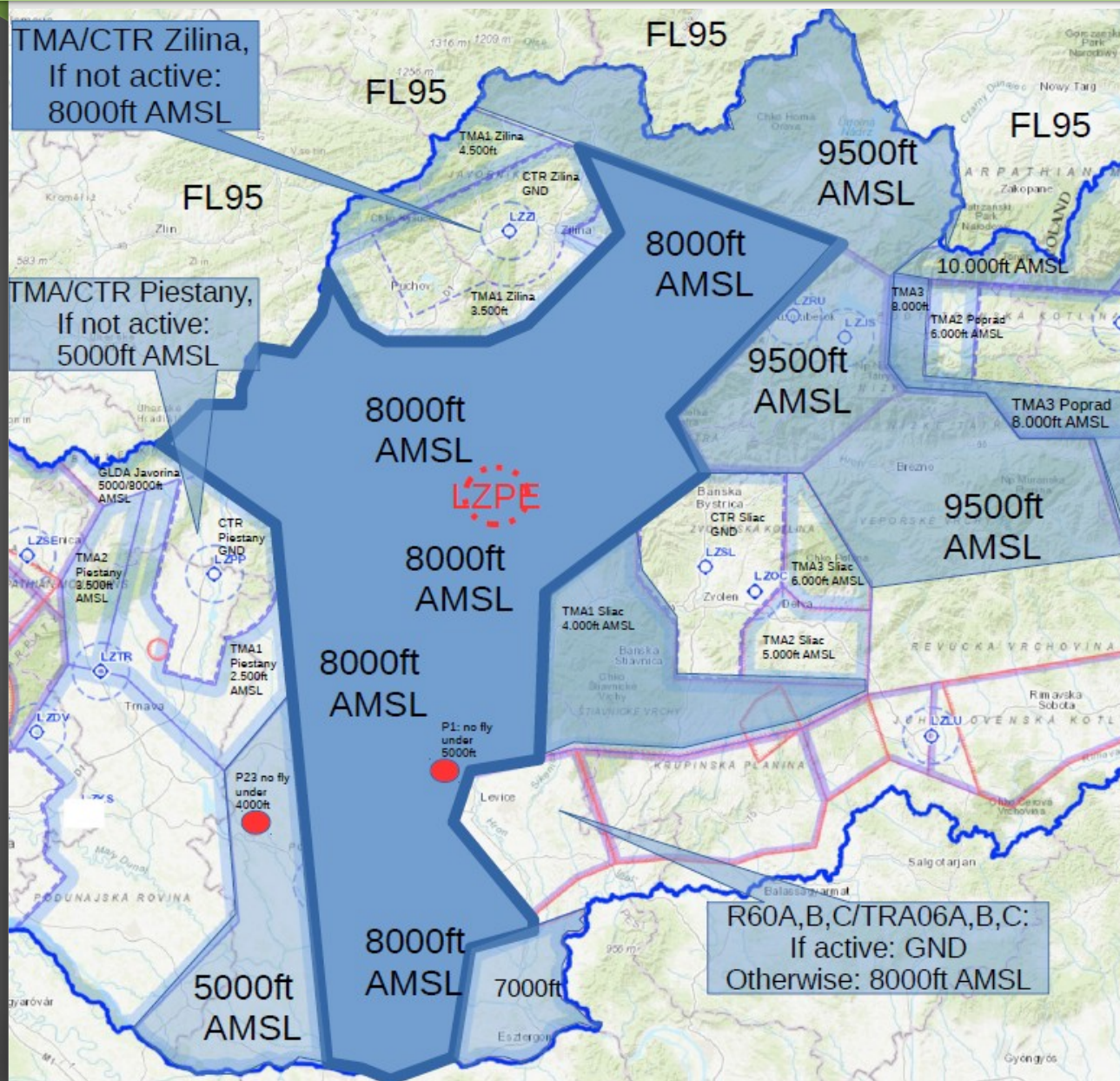
# Sensitive fauna

VFR flights shall not be flown over the areas at a height less than 1 000 ft (300 m) above the highest obstacle within a radius of 600 m from the aircraft





## Competition area in SVK – usual height limits



When:

- Gliding Areas are active and LZR40 is off  
than, this limits are valid.  
Transition level: 10000ft or more: for altimeter settings use regional QNH, from task sheet

TMA/CTR Zilina: when off,  
than 8000ft AMSL, otherwise entry  
prohibited (you can still fly under  
TMA...)

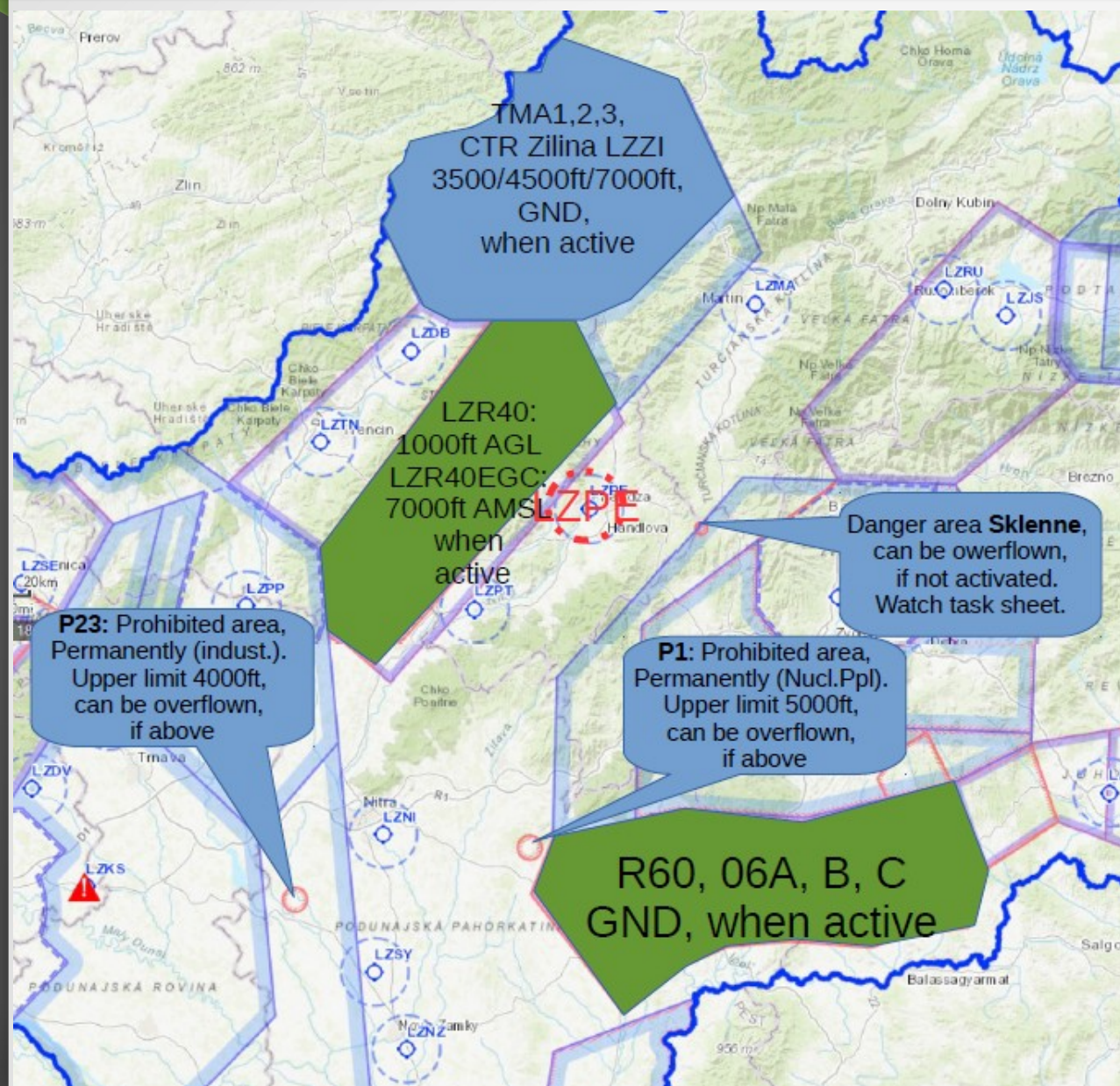
TMA/CTR Piestany: when off,  
than 5000ft, otherwise entry  
prohibited (fly under TMA poss.)

TMA/CTR Sliac: allways on  
(you can fly under TMA...)

TMA4 Bratislava: always active,  
lower limit 5000ft  
R60/TRA06 A, B C: if active:  
GND. Otherwise: 8000ft  
Rutol area (south): always 7000ft



# Competition area – temporary height limits



Watch task sheet for:

**Zilina LZZI:** CTR: GND

TMA1: 3500ft

TMA2: 4500ft

TMA3: 7000ft, if GLDA Martinky active: 8000ft

If TMA/CTR is off, than 8000ft AMSL, otherwise height limits as above

**LZR40:** if activated: 1000ft AGL

**LZR40 EGC:** if activated: 7000ft AMSL

**Danger area Sklenne:** can be overflown in any height, if not active (usually off)

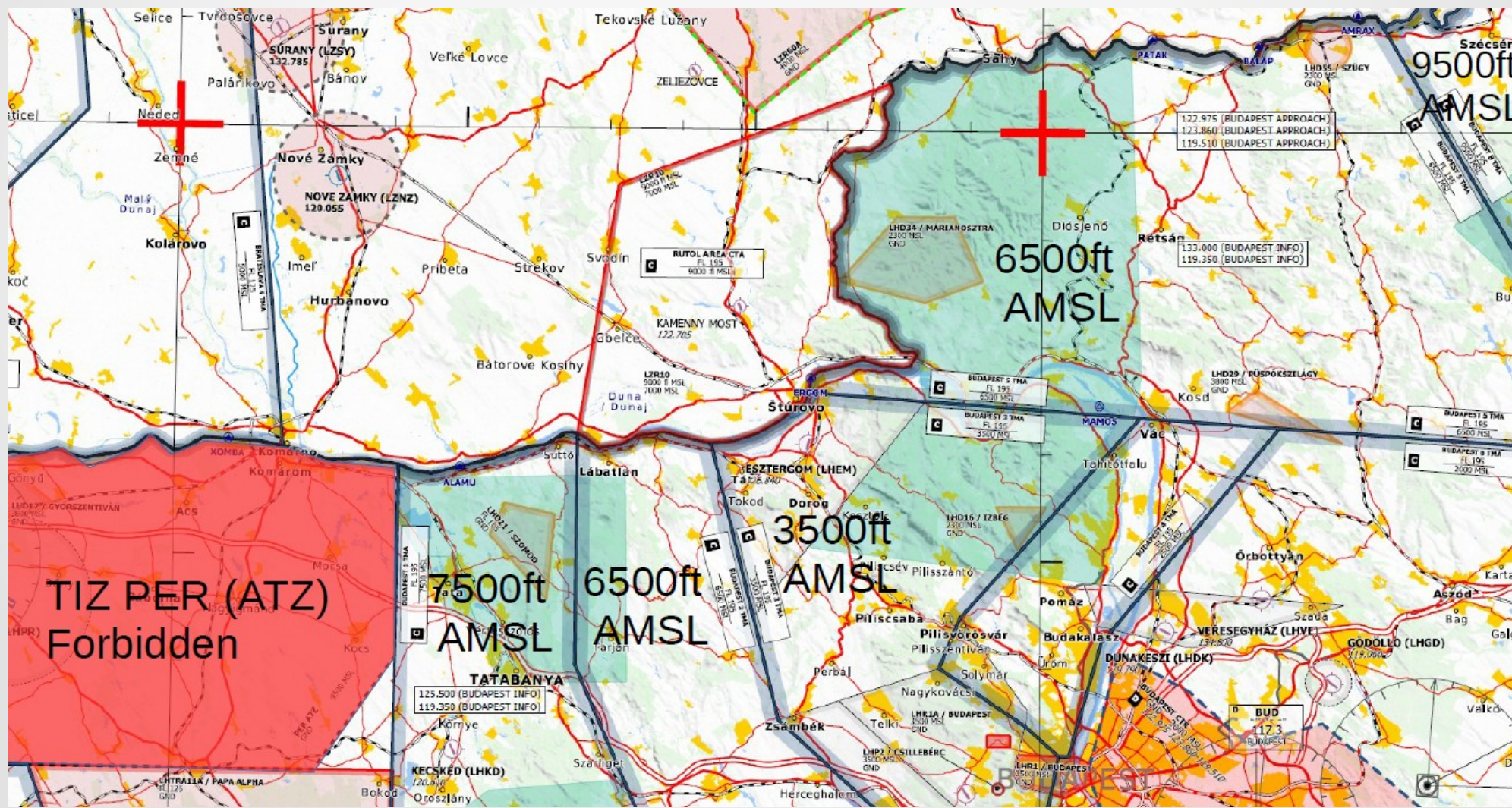
**R60A, 06A, B, C:** GND, when active.

Free on weekends and holidays, than 8000ft.



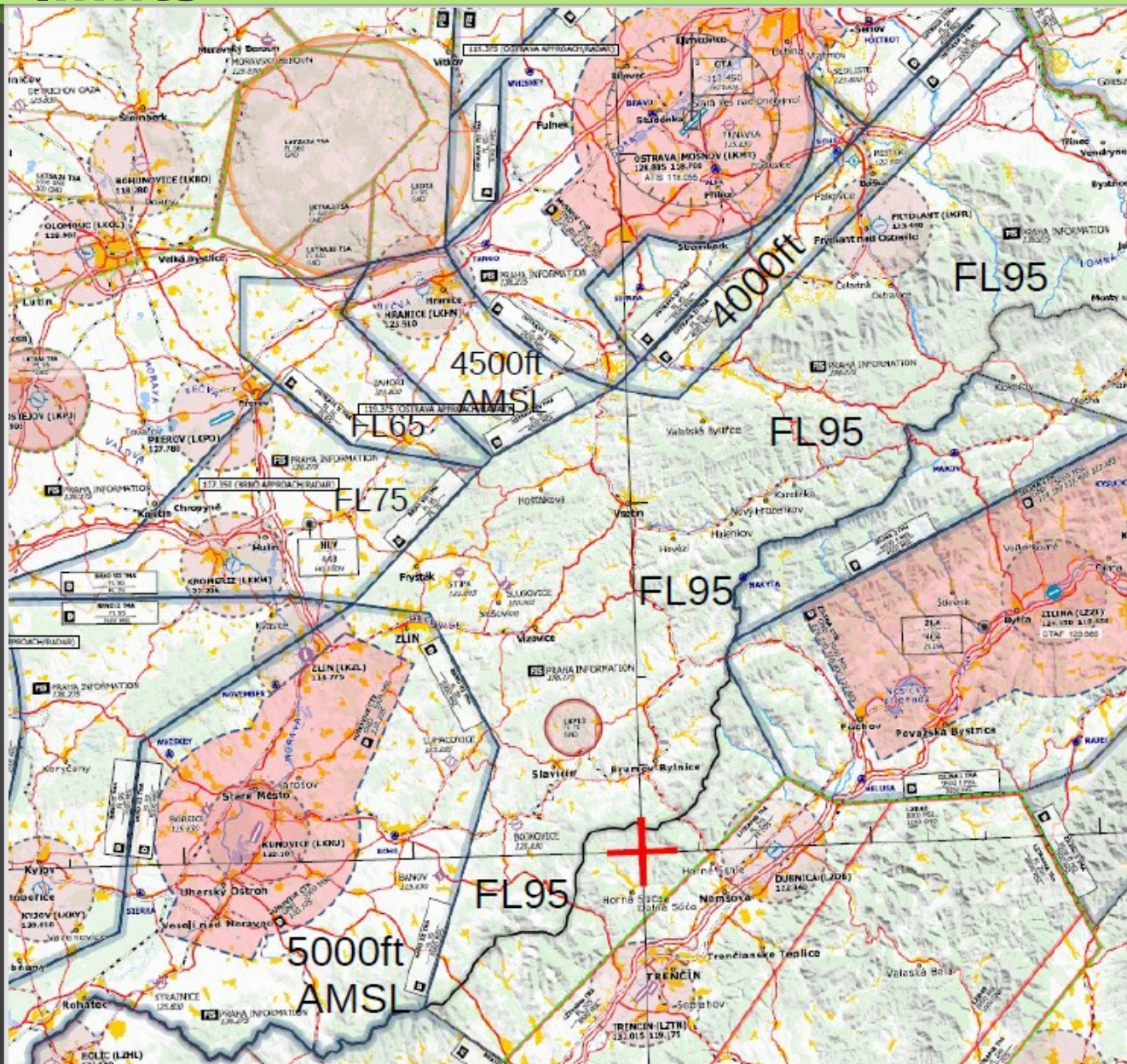
# Competition area in HU: usual height limits

Watch task sheet for activation of danger/prohibited areas.





# Competition area in CZE: usual height limits



Watch task sheet for activation of danger/prohibited areas.

Transition level:  
5000ft AMSL or  
1000ft AGL

LKR13 Vrbětice:  
Prohibited from  
GND to FL75

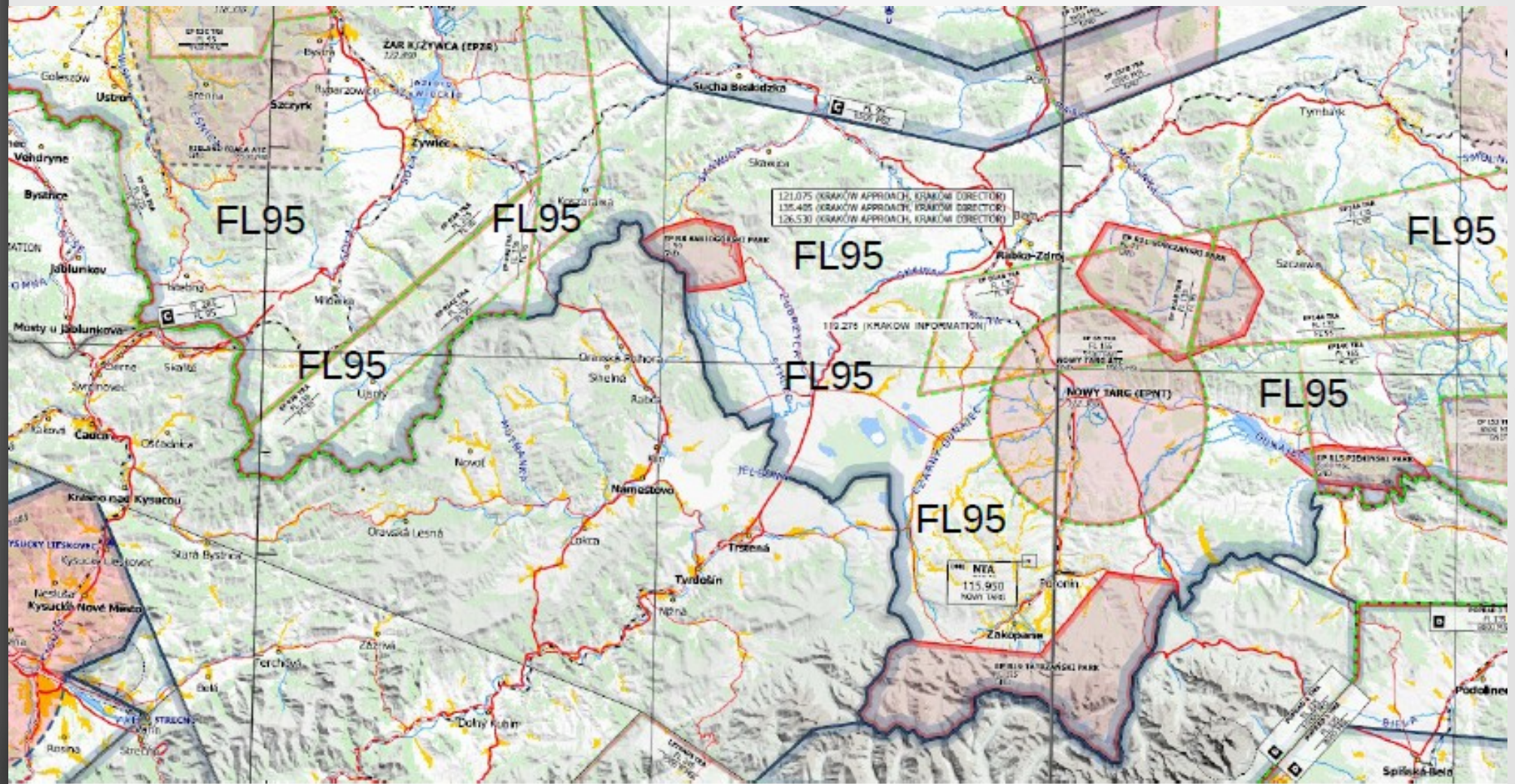
G class  
from GND only up to  
1000ft AGL

E class  
from 1000ft AGL up  
to FL95



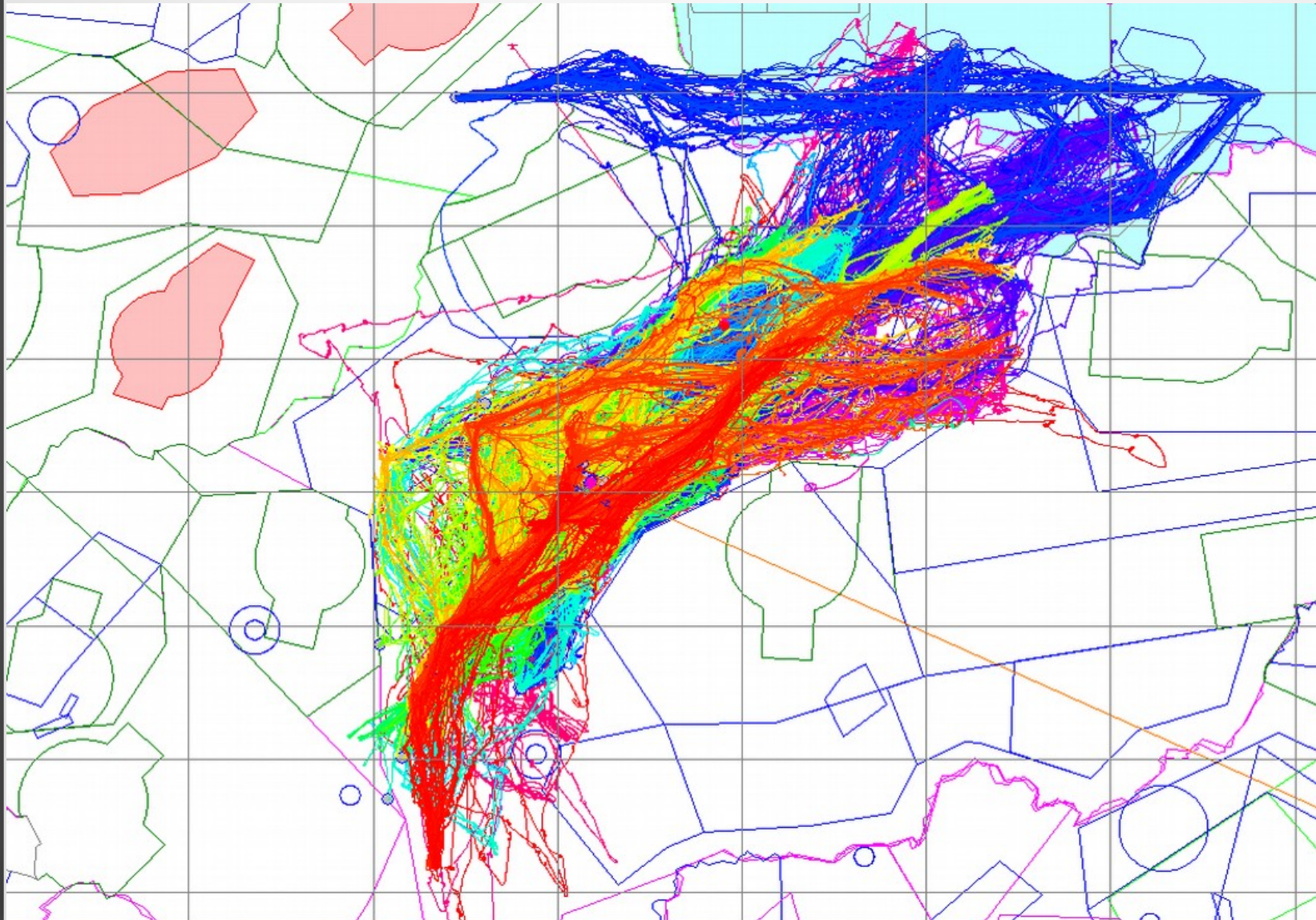
# Competition area in PL: usual height limits

Watch task sheet for activation of danger/prohibited areas.  
Transition level: 6500ft AMSL





## Typical tasks setting from Prievidza



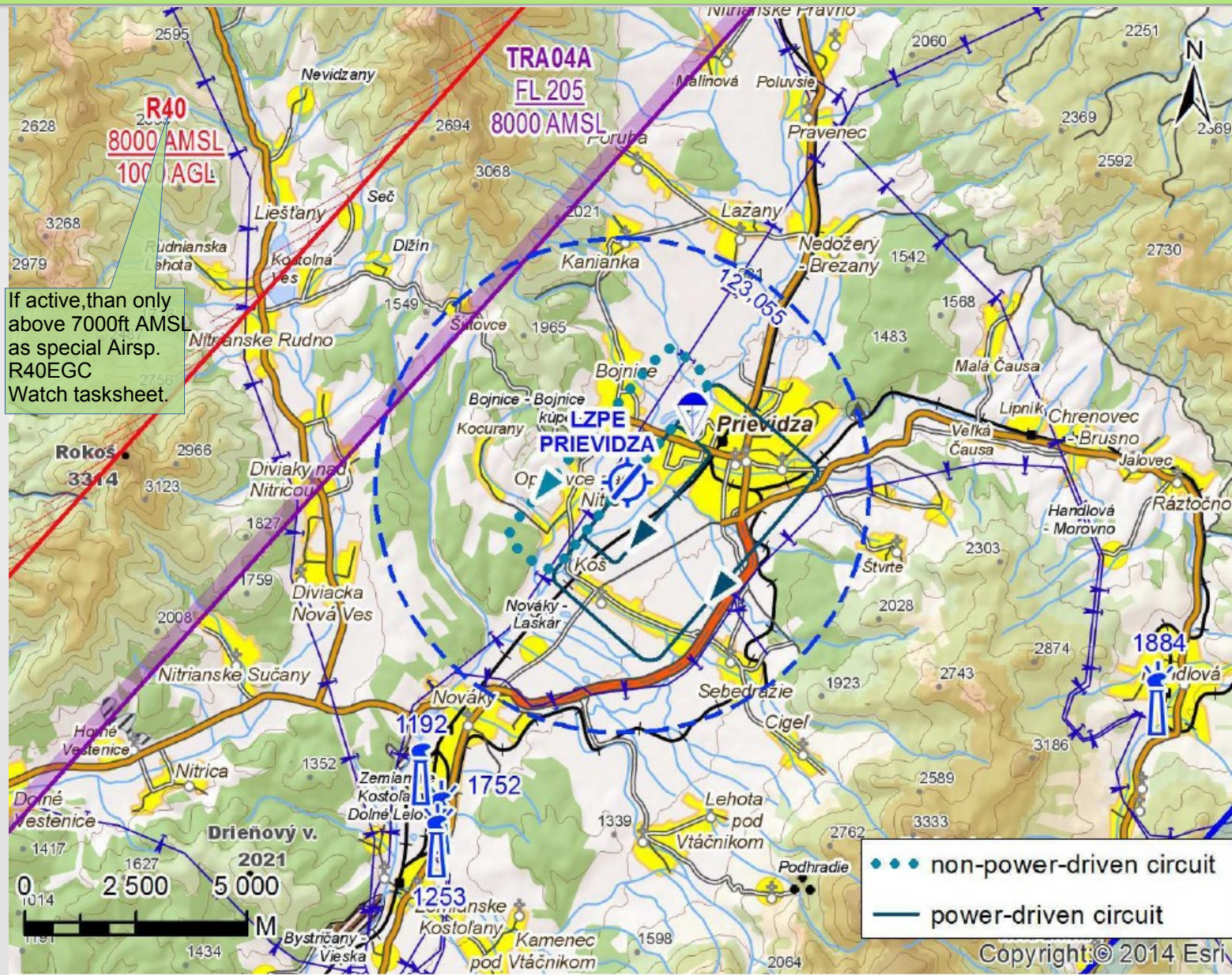
One colour  
=  
one  
day/task

Often, fly to  
PL,CZ,

Avoid  
TMA, TSA,  
TRA, R



# Airfield LZPE: ATZ, LZR40, TRA04A



ATZ:  
circle with  
radius of 3nm  
(5,5km)

Parachute  
warning:  
beware of para  
jumping,  
within ATZ:  
monitor freq.

R40: will be  
inactive  
or from  
7000ft AMSL  
TRA04A: above  
8000ft AMSL

Beware of  
power lines  
in APT vicinity.



# SNA: European Gliding Championship Prievidza 2019



Thank you for your attention.  
Questions?